

FileWave Power/Battery Reporting

Description

FileWave is immensely powerful, but can be daunting when it comes to stitching the various components of a complex workflow together. Content packs are meant to give you a leg-up in creating distributable content and are also a great way to learn by example! Each content pack is meant to be a "whole solution", putting together all of the pieces of FileWave to accomplish a goal.

This FileWave Content Pack is built to report on battery health and power use settings for macOS and Windows clients. It is comprised of all of the contents listed below:

What You Get in this Content Pack

This content pack provides:

Custom Fields:

"Custom Fields" are a terrific way to extend the "inventory attributes" of your devices. In this content pack we have included:

- Battery Name: Typically the "model name" of the battery
- Battery Manufacturer: The maker of the battery
- Battery Serial Number: The serial number of this specific battery
- Battery Cycle Count: The number of times a battery has been fully charged/discharged (only some batteries support)
- Battery Capacity: Battery Capacity is represented as a percent of charge the battery can take compared to its original capacity. A lower percentage means degradation of storage ability.
- Display Sleep Setting: The amount of time (in seconds) before the display is configured to go to sleep after idle
- Disk Sleep Setting: The amount of time (in seconds) before the hard drive is configured to go to sleep after idle
- System Sleep Setting: The amount of time (in seconds) before the entire system is configured to go to sleep after idle



Note that the battery information collected above does not try to account for multiple batteries, so you may want to adjust if you have that scenario in your environment.

Reports (aka Inventory Queries):

Reports are a great way of measuring the effectiveness of distributing content, and can be used for all sorts of compliance purposes as well. Trust, but verify is what reports are all about. In this pack we have included the following reports:

- Battery Report: Includes information on devices and their batteries
- Low Battery Capacity Report: Includes information on v=batteries that are lower than 30% capacity...you can modify this threshold by modifying the report criteria
- Power Scheme Report: Includes information on devices and their power saving settings for display, disk and system

Dashboards:

Dashboards build upon reports and are an incredibly powerful tool for showing aggregated data in charts and graphs. This pack provides the following dashboard(s):

- Power/Battery Dashboard: This dashboard breaks down most of the important power savings and battery utilization information for your environment

Ingredients



For FileWave 16.1.0 or higher you merely need to go in FileWave Central to Assistants -> Content Packs and then can add the Content Pack with 1-click. The instructions below in this article are for below 16.1.0.

- FileWave Central Admin & Credentials
- Base64 API Token for 'fwadmin' account

Windows Content Pack	Windows Content Pack Download
macOS Content Pack (ARM based)	<div> On macOS, we need to use curl to download so that Gatekeeper doesn't quarantine the import application. You can copy and paste the following into Terminal.app...the example provided downloads import_pack.zip to the desktop</div>

```
curl -o ~/Desktop/import_pack.zip https://kb.filewave.com/attachments/397
```

macOS Content Pack (Intel based)

1 On macOS, we need to use curl to download so that Gatekeeper doesn't quarantine the import application. You can copy and paste the following into Terminal.app...the example provided downloads import_pack.zip to the desktop

```
curl -o ~/Desktop/import_pack.zip https://kb.filewave.com/attachments/399
```

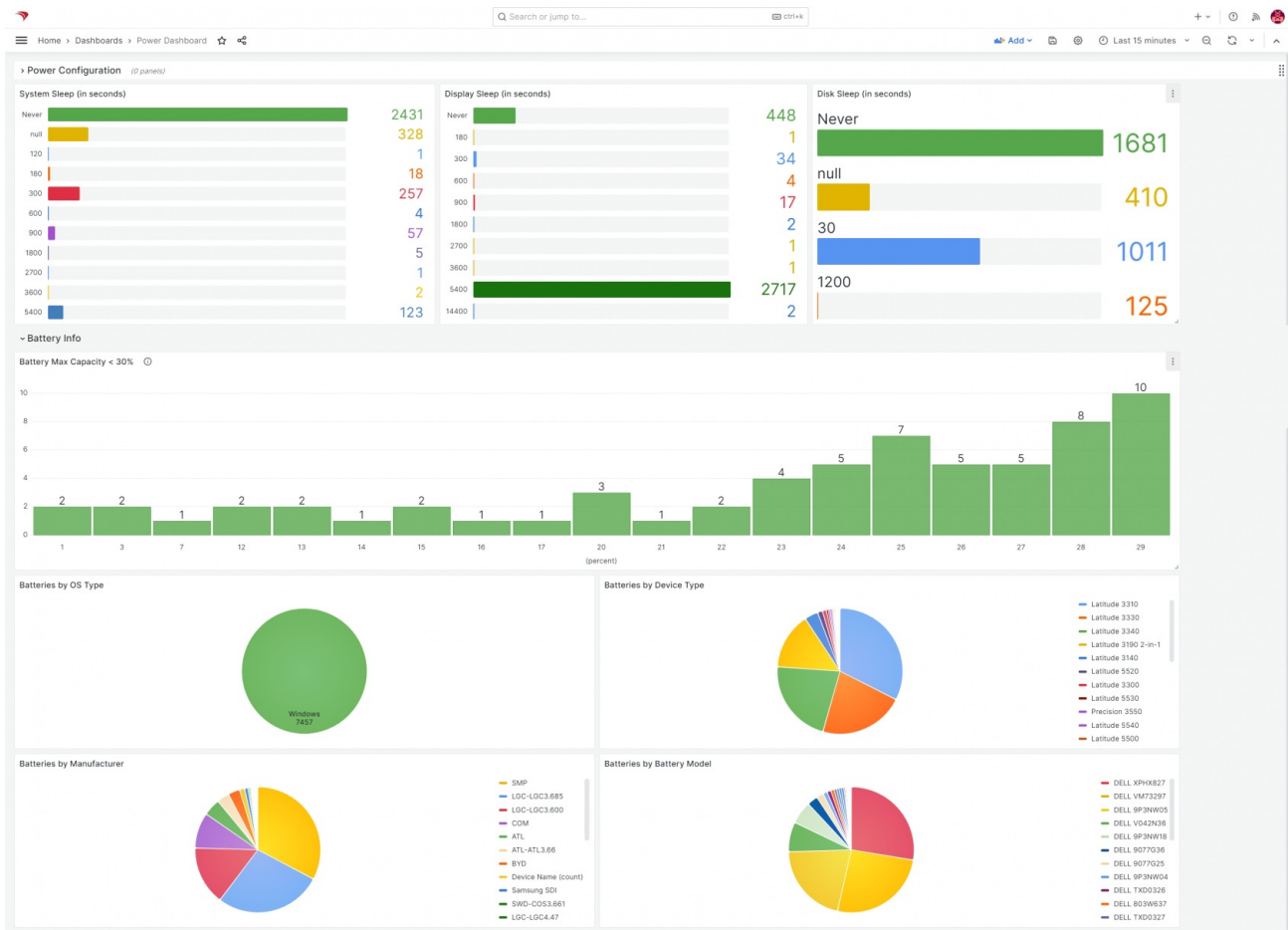
1 On macOS, Apple's Gatekeeper will quarantine the download if you don't use curl to download the zip. Quarantine may be removed, after unzipping the download, with the following command which will allow the tool to run:

```
xattr -rd com.apple.quarantine <path to unzipped folder>
```

Directions

1. Download the above content pack and unzip it
2. Run the <app name> tool, using appropriate credentials for your environment
3. Once completed, verify the new content in your system (and [import dashboards](#), if applicable)

Sample Screenshots



Notes

Note that you can freely edit any of the content in this content pack. We do recommend reviewing each of the types of content as provided first though so that you can get a feel for how things "fit together" before modification.

Related Content

- [How to Import a Content Pack](#)
- [Getting an API Token](#)
- [Importing a Grafana Dashboard](#)
- [Content Packs](#)
- More Info on how to use:
 - [Custom Fields](#)
 - [Client Group Structure](#)
 - [Inventory Reports](#)
 - [Custom Dashboards](#)

🕒Revision #10

★Created 2 October 2024 18:45:29 by Tony Keller

✎Updated 3 June 2025 20:02:27 by Josh Levitsky