

Apple DEP Enrollment

Benefits of DEP Enrollment

iOS, tvOS, and macOS can all take advantage of Apple DEP enrollment. DEP enrollments will force a specific set of preferences on the device and force enrollment to FileWave any time the device is Factory Reset. Another huge benefit of DEP is that DEP is the only enrollment option that prevents the end-user from removing the MDM Profile and unenrolling the device. These two aspects can be very helpful in device recovery situations since if the device is wiped after being lost or stolen, the device will automatically enroll back into FileWave where you can lockdown the device and collect Location Tracking information to report to the authorities.

If you have not already created your Apple Push Notification Service Certificate (APNS) or configured DEP to sync with FileWave, please review the [Platform Integrations > Apple Integration](#) section before continuing.

Creating DEP Profiles

The first step to enrolling your Apple devices via DEP is to create a DEP Profile. The DEP Profile is what will determine the initial settings applied to the device during enrollment and applies to all Apple platforms. Unless needing explicit separation of the initial enrollment settings, one DEP Profile can suffice for all of your devices. This is partly possible since we can use FileWave Custom Fields to uniquely name the devices.

1. Open FileWave Admin and navigate to "Assistants > DEP Association Management".
2. Click the "[+]" button on the right-hand side under "Profiles".
3. Fill out each tab according to your management preferences.

Information	Options	Setup Assistant	Account	Anchor Certs	Supervising Certs	Device Naming	Activation Lock Management
-------------	---------	-----------------	---------	--------------	-------------------	---------------	----------------------------

ⓘ This information is optional but will display on devices when Locked or in Missing Mode.

- **Support Phone Number**
- **Support Email**
- **Department**

Information	Options	Setup Assistant	Account	Anchor Certs	Supervising Certs	Device Naming	Activation Lock Management
-------------	---------	-----------------	---------	--------------	-------------------	---------------	----------------------------

ⓘ These items are very crucial so please choose wisely.

- **Do not allow user to skip enrollment step** - Forces device to enroll into FileWave (**check recommended**)
- **Supervise** - Allows for full device management using Profiles (**check recommended**)
 - **Is MDM Removable** - Allows user to remove MDM Profile and unenroll device (**uncheck recommended**)
 - **Allow Pairing** - Allows pairing to iTunes (**optional**; can be restricted using Profile)
 - **Automatic Advance** - Applies only to tvOS (**optional**)
- **Enable Shared iPad** - Leave disabled unless planning to use Apple Classroom
 - **Number of users**

Information	Options	Setup Assistant	Account	Anchor Certs	Supervising Certs	Device Naming	Activation Lock Management
-------------	---------	-----------------	---------	--------------	-------------------	---------------	----------------------------

ⓘ Most users choose to disable all Setup Assistant items except for "Location Services" to speed up the initial setup.

- **Location Services** - Allows FileWave to do Location Tracking and set timezone automatically

Information	Options	Setup Assistant	Account	Anchor Certs	Supervising Certs	Device Naming	Activation Lock Management
-------------	---------	-----------------	---------	--------------	-------------------	---------------	----------------------------

ⓘ Applies only to macOS devices; at least one Administrator account must be created.

- **Prompt user to create an account type of:** - allows user to create account during macOS setup
- **Create managed macOS Administrator Account** - creates Admin account (**recommended**)

Information	Options	Setup Assistant	Account	Anchor Certs	Supervising Certs	Device Naming	Activation Lock Management
-------------	---------	-----------------	---------	---------------------	-------------------	---------------	----------------------------

ⓘ Skip this section; automatically configured.

Information	Options	Setup Assistant	Account	Anchor Certs	Supervising Certs	Device Naming	Activation Lock Management
-------------	---------	-----------------	---------	--------------	--------------------------	---------------	----------------------------

ⓘ Skip this section unless you'd like to manage iOS using DEP and Apple Configurator 2.

Information	Options	Setup Assistant	Account	Anchor Certs	Supervising Certs	Device Naming	Activation Lock Management
-------------	---------	-----------------	---------	--------------	-------------------	----------------------	----------------------------

ⓘ Uniquely names iOS, tvOS, and macOS device during DEP Enrollment.

- **Naming Policy** - Leave as default
- **Naming Template** - Field accepts plain text and variables including native device data and FileWave Custom Fields.

Information	Options	Setup Assistant	Account	Anchor Certs	Supervising Certs	Device Naming	Activation Lock Management
-------------	---------	-----------------	---------	--------------	-------------------	---------------	-----------------------------------

ⓘ Configures or disables Activation Lock for iOS and macOS.

- **Activation Lock Configuration**
 - Disabled - completely disables Activation Lock and FindMy
 - iCloud - Allows Activation Lock for any Apple ID
 - ASM/ABM (Organization) - Allows Activation Lock on for Managed Apple IDs
- **Allow Activation Lock only if Bypass Code is available** - Failsafe to ensure Bypass Code is stored in FileWave's encrypted database (**recommended**)

Assigning DEP Profiles

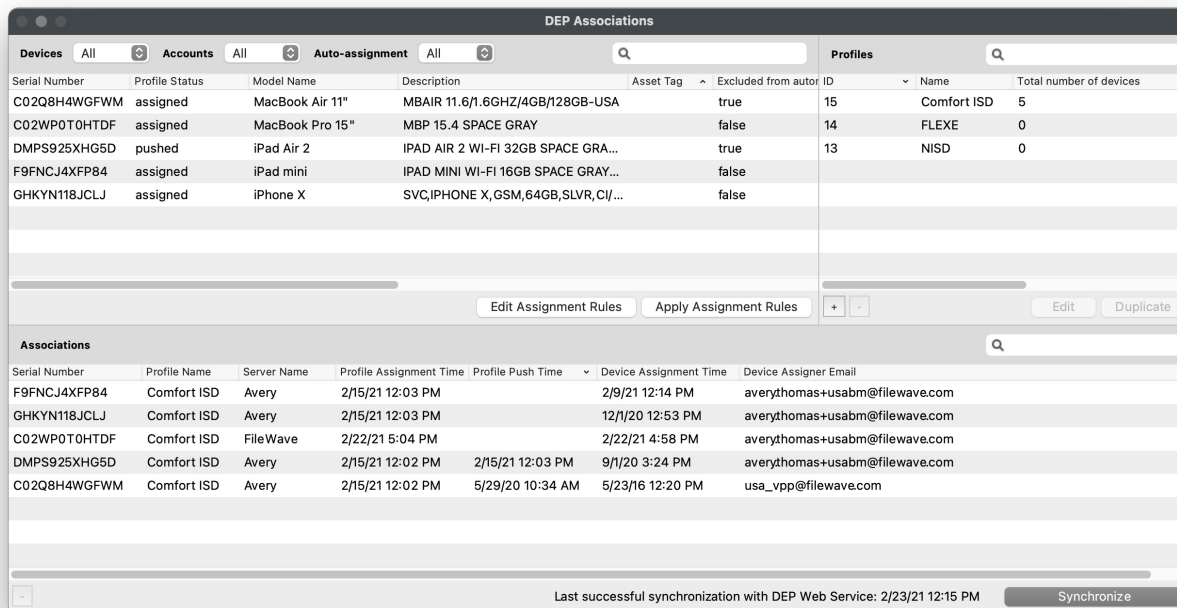
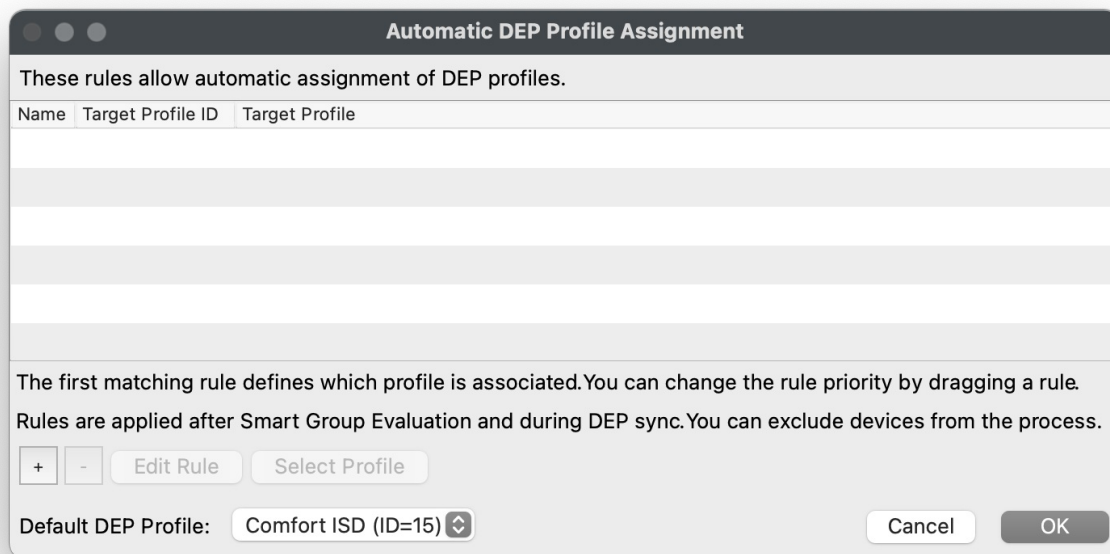
Assigning DEP Profiles is very easy within FileWave, especially if you only have one DEP Profile since you can set a Default DEP Profile. With a Default DEP Profile configured, anytime you assign a new device to the FileWave MDM Server from within Apple School Manager or Apple Business Manager, the DEP Profile will automatically apply and the device will be ready for DEP enrollment. However, if you have multiple DEP Profiles, FileWave will also enable you to create Rule-based DEP Profile assignments or you can always just drag-n-drop a DEP Profile onto a single device or multiple devices onto a DEP Profile.

The "Profile Status" field in the "Devices" pane tells you the current status of the DEP profile on the client device.

- Empty - no DEP Profile assigned
- Assigned - DEP Profile has been assigned but DEP enrollment has not occurred
- Pushed - Setup Assistant setting has run and settings have been enforced on client device
- Removed - DEP profile has been unassigned from device, will be changed to "Empty" after DEP sync

Setting Default DEP Profile

1. Open FileWave Admin and navigate to "Assistants > DEP Association Management".
2. Click "Edit Assignment Rules".
3. Select your recently created DEP Profile from the "Default DEP Profile" dropdown menu.
4. Click "OK".
5. Click "Apply Assignment Rules" to save the changes.
6. Hold the Option or Alt key on your keyboard and click "Synchronize (full sync)" button in lower right-hand corner
7. You should now see that all of your devices have been "Assigned" to your DEP Profile.



Rule-based DEP Profile Assignment

1. Open FileWave Admin and navigate to "Assistants > DEP Association Management".
2. Click "Edit Assignment Rules".
3. Click "[+]"
4. Select the DEP Profile you'd like to assign based on rules.
5. Drag-n-drop the Inventory data point the devices must meet to be assigned to the DEP Profile into the "Criteria" section.
6. Verify the criteria is correct by viewing the returned devices in the "Fields" section.
7. "Save" the query and "OK" to save rule definition.
8. Click "Apply Assignment Rules" to save the changes.
9. Hold the Option or Alt key on your keyboard and click "Synchronize (full sync)" button in lower right-hand corner.
10. You should now see that your selected devices have been "Assigned" to your DEP Profile.

Assignment Rule - Rule for NISD

Component

Custom Fields

DEP Account

DEP Device

Asset Tag

Color

Description

Device Assigner Email

Device Assignment Time

Device Family

Excluded from automatic as...

Model Name

Operating System

Profile Assignment Time

Profile Push Time

Profile Status

Serial Number

The device's operating system:
'iOS', 'OSX', 'tvOS'

Internal name: os

Name: Rule for NISD

CriteriaFields

All of these expressions must be true

☐ Not

DEP Device / Operating System

is

OSX

+

-

Add Group

Move up

Move down

Move in next group

Move before parent

Cancel

Save

Automatic DEP Profile Assignment

These rules allow automatic assignment of DEP profiles.

Name	Target Profile ID	Target Profile
Rule for NISD	13	NISD

The first matching rule defines which profile is associated. You can change the rule priority by dragging a rule. Rules are applied after Smart Group Evaluation and during DEP sync. You can exclude devices from the process.

+

-

Edit Rule

Select Profile

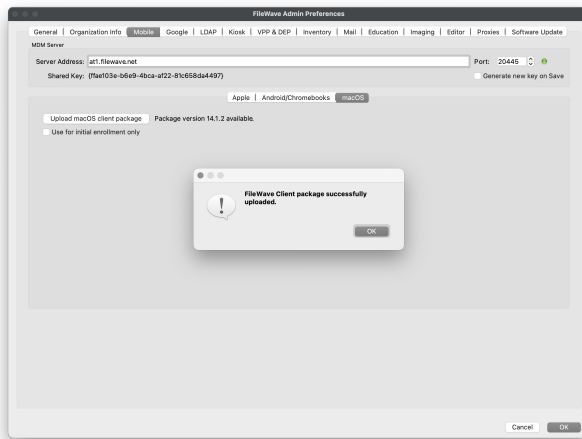
Default DEP Profile: Comfort ISD (ID=15)

Cancel

OK

- ## Manually assign DEP Profile

- Sync Computer Name = macOS Hostname will be FileWave Client Name (recommended)
 - Server Name = Fully Qualified Domain Name of your FileWave Server
 - Server Port = 20015 (do not modify this as it will automatically go to the proper SSL port if you put in 20015)
 - Client Password = Password used to change individual Client Preferences and to start screen-sharing session
- Optional Settings
 - Is Tracking = Is Location Tracking Enabled for macOS Clients
 - Monitor Port = Port used for FileWave Client Monitor (do not modify)
 - Overwrite Configuration = Overwrite any existing FileWave Client configuration with settings entered here (recommended)
 - Remotecontrol Enabled = Screen-sharing enabled for Windows Clients
 - Remotecontrol Prompting = Whether or not to Prompt the end-user before starting screen-sharing session
 - Server Certificate = Only upload certificate is using a Self-Signed Certificate; not required for CA-signed certificate
 - Server Publish Port = 20005 (do not modify)
 - Tickle Interval = Idle time for Windows Clients before checking for new Model Update (do not modify)
 - Vnc Relay Port = 20030 (do not modify)
 - Vnc Server Port = 20031 (do not modify)
- Booster Settings
 - Do not configure unless instructed by FileWave SE



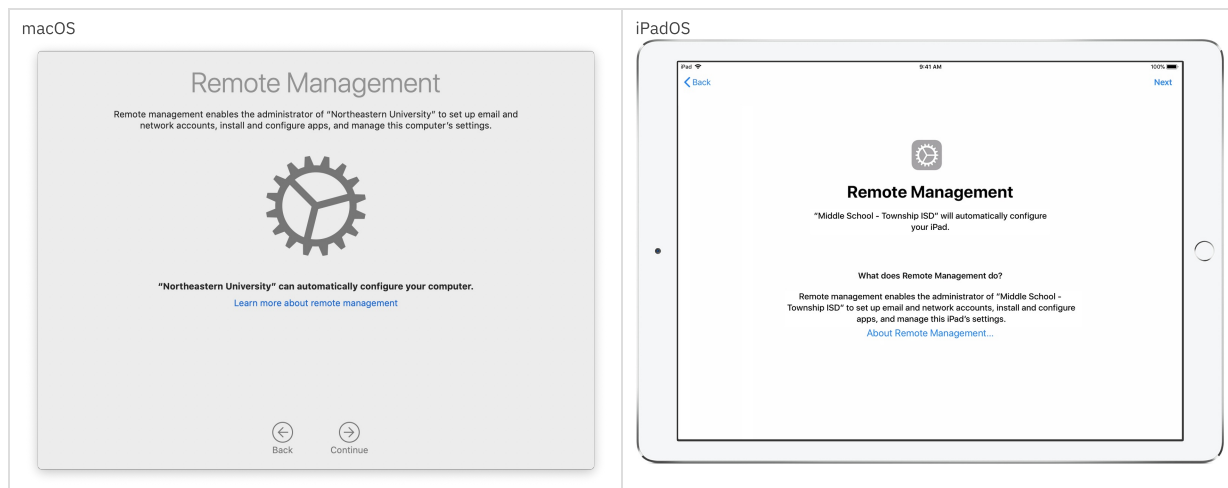
Upload custom FileWave Client PKG to FileWave

1. Navigate to "FileWave Admin > Preferences > Mobile > macOS".
2. Click "Upload macOS client package" and authenticate.
3. Select the extracted "FileWaveClient_XX.X.XX-FQDN-XX-XXX-XXXX.pkg" from previous section.
4. Wait for the upload confirmation prompt.
5. Optionally, enable "Use for initial enrollment only".
 - If this box is unchecked, FileWave will deploy any new FileWave Client version uploaded to all MDM enrolled macOS devices.
6. Click "OK" to save the Preferences.

Enrolling Apple devices via DEP

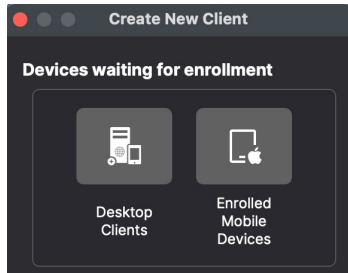
Now that your devices have been "Assigned" to a DEP Profile, they can either be Factory Reset if already configured or taken fresh out of the box from Apple and they will automatically enroll into FileWave.

If getting authentication required during enrollment, please review [this](#) section to learn how to disable DEP enrollment authentication.

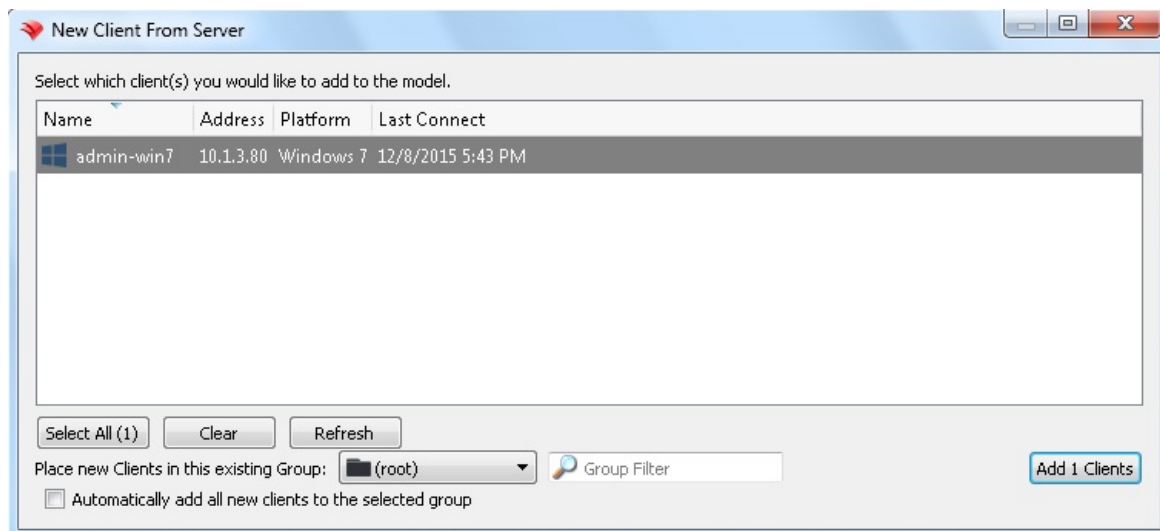


Finalizing adding of clients


FileWave Clients communicating to the FileWave server will not be able to connect until you add them to the model. We will now allow our new client to join the FileWave server.



1. Open FileWave Central.
2. Click on the “New Client” button in the tool bar
3. Select either "Desktop Clients" or "Enrolled Mobile Devices" from the dialog box depending on whether it is a macOS or iPad.
4. Select your new client from the list presented.
5. Click the “Add Clients” button in the lower right.



Once you have selected “Add Clients”, you will be taken to the Clients view in FileWave Admin. By adding a client to the server, we have made changes to the model. In order for those changes to take effect, we need to perform a model update.

 You can also decide to automatically add new clients to skip the step of adding devices. This is discussed here: [Conflict Resolution](#)

Making Changes to the Model

Remember that you will need to update the model anytime that you want to apply changes you have made. You can update the model after a single change or multiple changes (adding multiple clients, creating groups, etc.)

Congratulations! Your FileWave environment is now up and running! From here you can continue to add clients, build and deploy Filesets!

FileWave Admin

FileEditServerAssistantsWindowHelp

Update Model

New Client

New Group

New Smart Group

New Association

Client Monitor

Customize Columns

Take Control

Tools

Dashboard

Clients

Filesets

Associations

Imaging

iOS Invent...

License Ma...

Inventory ...

Sample...

All Wi... 2

Mac O... 0

Windo... 1

Windo... 0

Windo... 0

All iOS... 0

All iOS... 0

5 Clients (12 Clones) 14 Groups, 2 Mobile Devices

Search clients or groups.

Search: EverythingClientsMobileGroupsClear all filters

Name	ID	Model	IP	Last Connect	Lock	Free Space	Platform	Comment	Serial
Android	75719								
iOS Facebook	74923								
iPads	77339								
Machines	75706								
admin-win7	81853	654	10.1.3.80	12/8/2015 5:49 PM		39.4 GB	Windows 7		60:F8
fwadmin's mac	81849		10.1.3.201	12/7/2015 3:09 PM		24.3 GB	Mac OSX 10.9 Mavericks		
marvel-mac	81009	643	24.6.195.20	11/6/2015 4:28 PM		93.1 GB	Mac OSX 10.10 Yosemite		
TeacherB	77942	583	73.158.165.129	6/20/2015 10:50 ...		40.1 GB	Windows 7	C02Q	
win7x86	81030	619	68.60.236.126	10/15/2015 9:02 ...		40.4 GB	Windows 7		60:F8
Mobile	75705								
OS X	75707								
Site A	75722								
Site B	75723								
Unmanaged apps	70729								
WIN	75715								
WIN Free Space 50G...	77961								

Revision #7

★Created 12 June 2023 20:58:26 by Josh Levitsky

✎Updated 21 June 2024 13:58:57 by Josh Levitsky