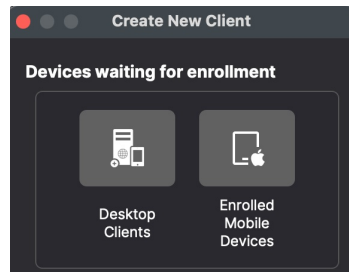


Windows Enrollment

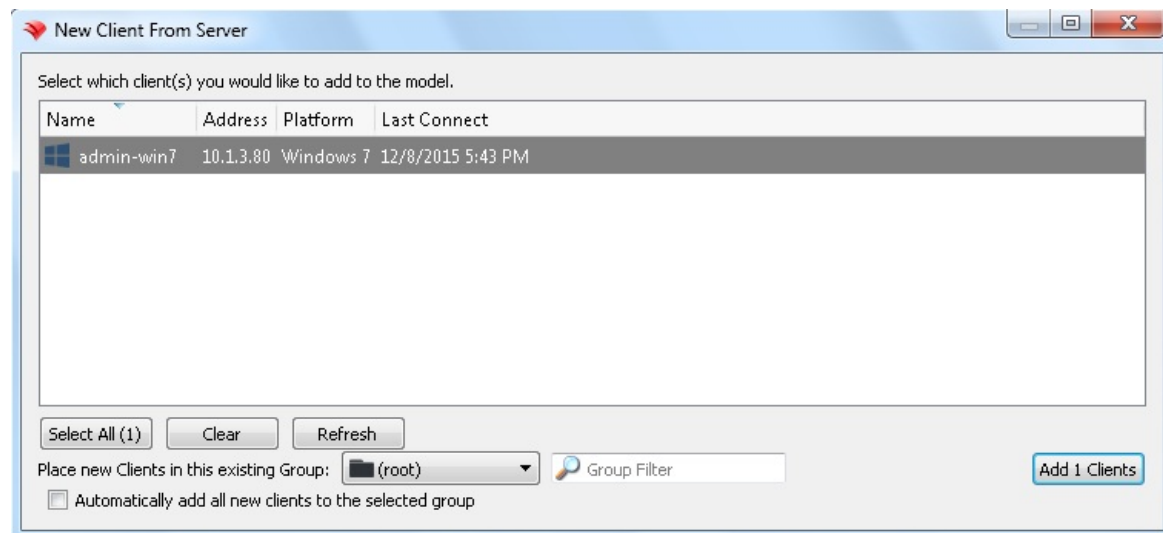
How to enroll Windows Clients into FileWave

If you haven't already, please consult the [Platform Integrations > Windows](#) section for guidance on how to install the Windows FileWave client. If your organization uses Microsoft Entra ID and your users authenticate using Microsoft Entra ID credentials into their Windows machines, please consider enrolling your Windows machines into FileWave via Microsoft Entra ID. This will also allow for Windows MDM management within FileWave. Learn more on our [Windows MDM](#) article.

FileWave Clients communicating to the FileWave server will not be able to connect until you add them to the model. We will now allow our new client to join the FileWave server.



1. Open FileWave Central.
2. Click on the "New Client" button in the tool bar
3. Select either "Desktop Clients" or "Enrolled Mobile Devices" from the dialog box depending on whether it is a macOS or iPad.
4. Select your new client from the list presented.
5. Click the "Add Clients" button in the lower right.



Once you have selected "Add Clients", you will be taken to the Clients view in FileWave Admin. By adding a client to the server, we have made changes to the model. In order for those changes to take effect, we need to perform a model update.



You can also decide to automatically add new clients to skip the step of adding devices. This is discussed here: [Conflict Resolution](#)

Making Changes to the Model

Remember that you will need to update the model anytime that you want to apply changes you have made. You can update the model after a single change or multiple changes (adding multiple clients, creating groups, etc.)

Congratulations! Your FileWave environment is now up and running! From here you can continue to add clients, build and deploy Filesets!

FileWave Admin

FileEditServerAssistantsWindowHelp

Update ModelNew ClientNew GroupNew Smart GroupNew AssociationClient MonitorCustomize Columns

Take ControlTools

Dashboard

Clients

Filesets

Associations

Imaging

iOS Invent...

License Ma...

Inventory ...

Sample...

All Wi... 2

Mac O... 0

Windo... 1

Windo... 0

Windo... 0

Windo... 0

All iOS... 0

All iOS... 0

5 Clients (12 Clones) 14 Groups, 2 Mobile Devices

Search clients or groups.

Search: EverythingClientsMobileGroupsClear all filters

Name	ID	Model	IP	Last Connect	Lock	Free Space	Platform	Comment	Serial
Android	75719								
iOS Facebook	74923								
iPads	77339								
Machines	75706								
admin-win7	81853	654	10.1.3.80	12/8/2015 5:49 PM		39.4 GB	Windows 7		60:F8
fwadmin's mac	81849		10.1.3.201	12/7/2015 3:09 PM		24.3 GB	Mac OS X 10.9 Mavericks		
marvel-mac	81009	643	24.6.195.20	11/6/2015 4:28 PM		93.1 GB	Mac OS X 10.10 Yosemite		C02Q
TeacherB	77942	583	73.158.165.129	6/20/2015 10:50 ...		40.1 GB	Windows 7		60:F8
win7x86	81030	619	68.60.236.126	10/15/2015 9:02 ...		40.4 GB	Windows 7		
Mobile	75705								
OSX	75707								
Site A	75722								
Site B	75723								
Unmanaged apps	70729								
WIN	75715								
WIN Free Space 50G...	77961								

Revision #9
★Created 12 June 2023 20:59:10 by Josh Levitsky
✎Updated 18 April 2024 13:49:39 by Josh Levitsky