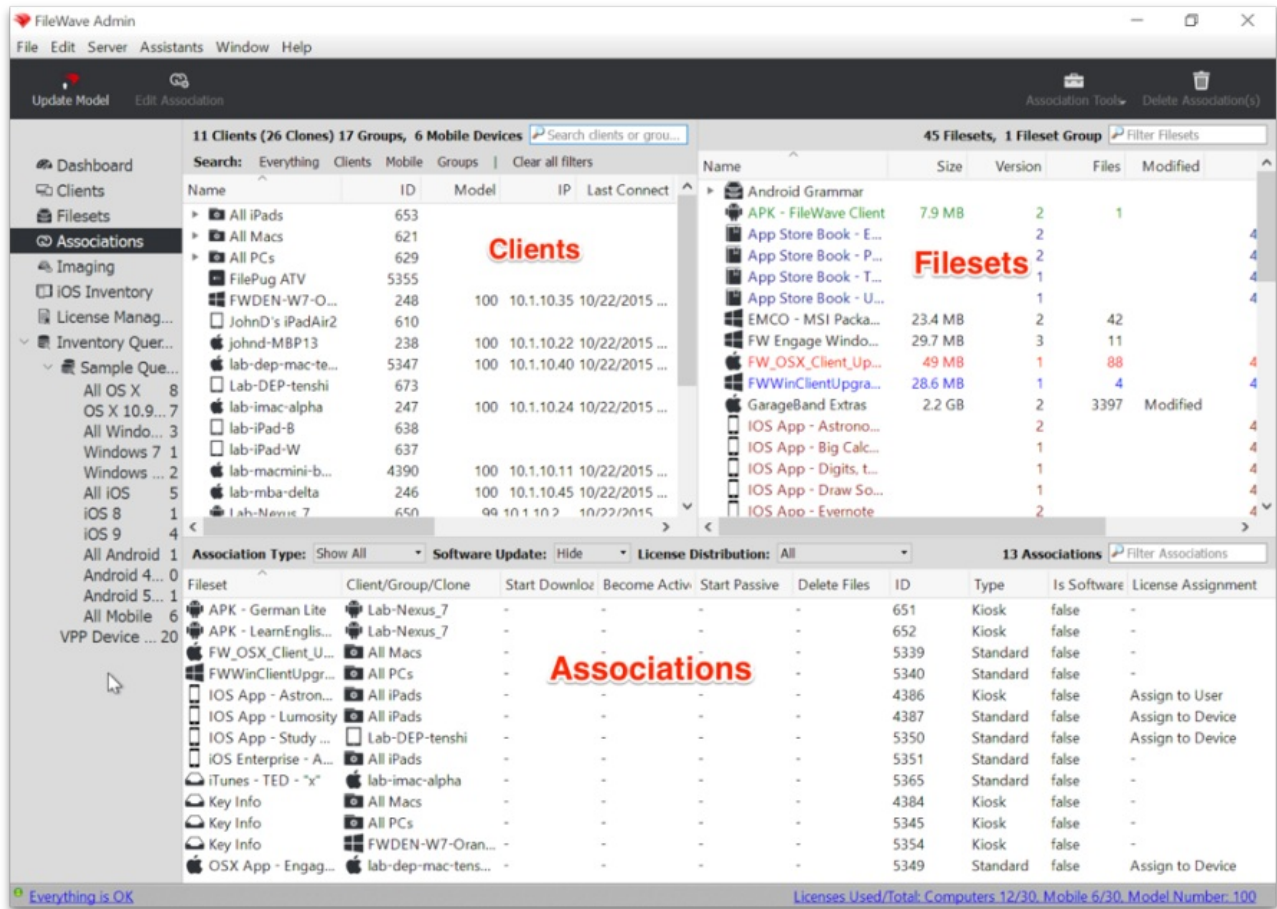


Using Associations with Filesets

The Associations pane is the primary location where you connect your Filesets to your Clients. The window has three primary sections:

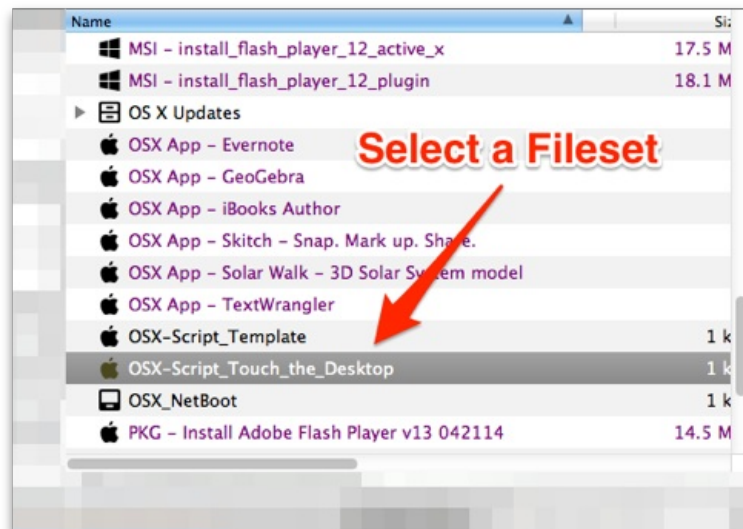


The link between a Fileset and a Client, or client Group, is called an Association. In order to distribute the contents of a Fileset, you associate a Fileset to a Client or Group.

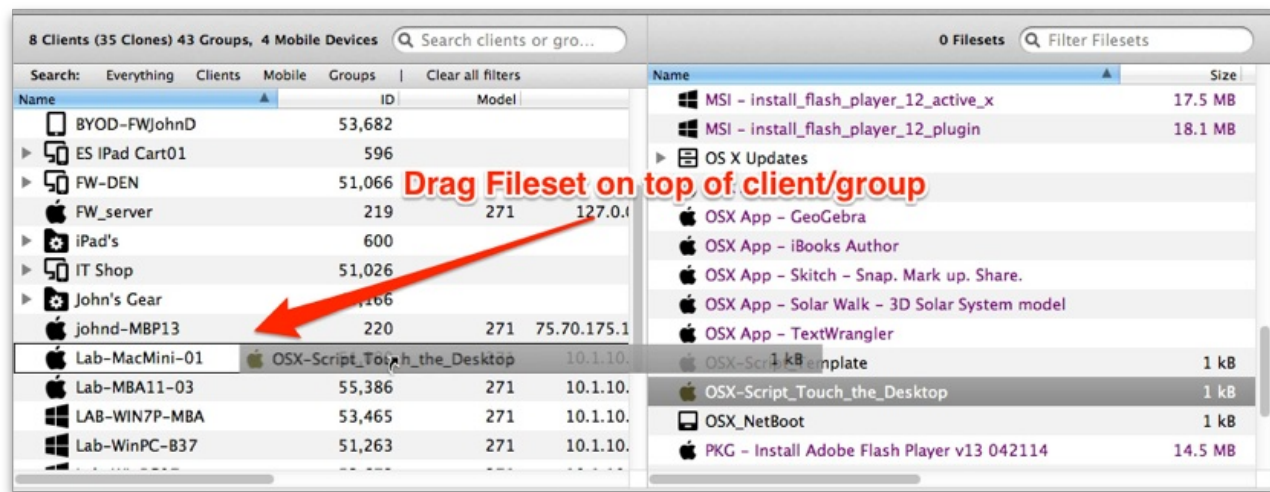
Basic Association Workflow

The basic workflow is select a Fileset, link it to a Client/Group, then update the server model.

1. You choose a Fileset from the upper right pane:



1. Click and drag the Fileset to the left into the Clients window and drop it on top of client or client Group you want to associate it to.



1. Finally, click on Update Model in the main toolbar, or use Cmd-U (macOS) or Ctrl-U (Win), to lock in the change.

Customizing the Association

The basic workflow will associate a Fileset with a Client. When the Client checks in following the server model update, the Client will get a new Manifest from the Server containing a list of any new Filesets to be associated or changes in existing Fileset associations. The Client compares the Manifest to its Catalog (current state after previous check-in) and build a work list if things have changed, which can include pulling down new Filesets, deactivating existing Filesets, etc

The power of Filesets and associations is that you can enhance the basic workflow with options that provide significant improvement in the deployment process, as well as expanded control of the workflow.

Viewing Associations for a single client / Group

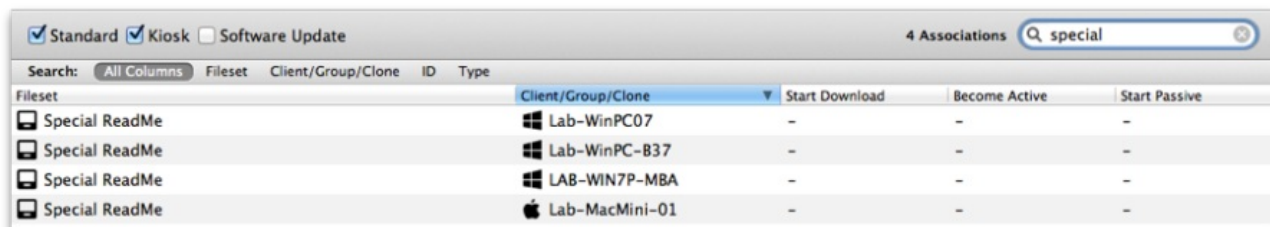
The first improvement over the basic workflow is being able to look at the Filesets that are associated with a specific Client or Group. You do this by right-clicking on the Client or Group in the Clients portion of the Associations window and selecting Show Associated Fileset. This will change the Associations view in the bottom part of the window to show you all of the Filesets that have been directly associated with that specific Client. We stress directly because you can associate Filesets with Groups of clients also. Those associations would not show up in this view. This concept is important because you may find yourself in a situation where you see something happening to a Client; but you don't see the Fileset that would create the situation in its direct associations. The solution to this situation is to look from the "other side" by selecting a Fileset and asking to view all of its associations. Associations may also be made to Smart Groups and or to Clones in regular Groups.

Viewing clients associated with a single Fileset

If you select a Fileset, you can right-click to view all associations that have been made for that specific Fileset. Doing this can resolve the problem you may have in tracking down how many different places a Fileset has gone.

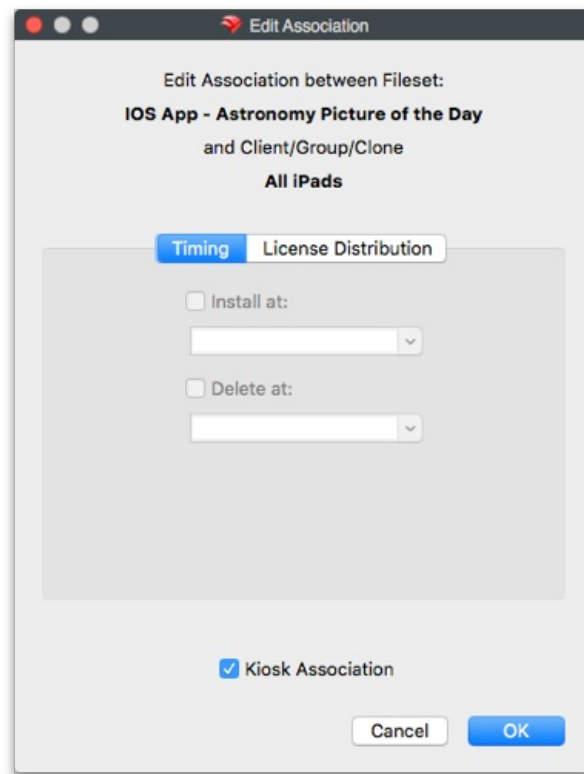
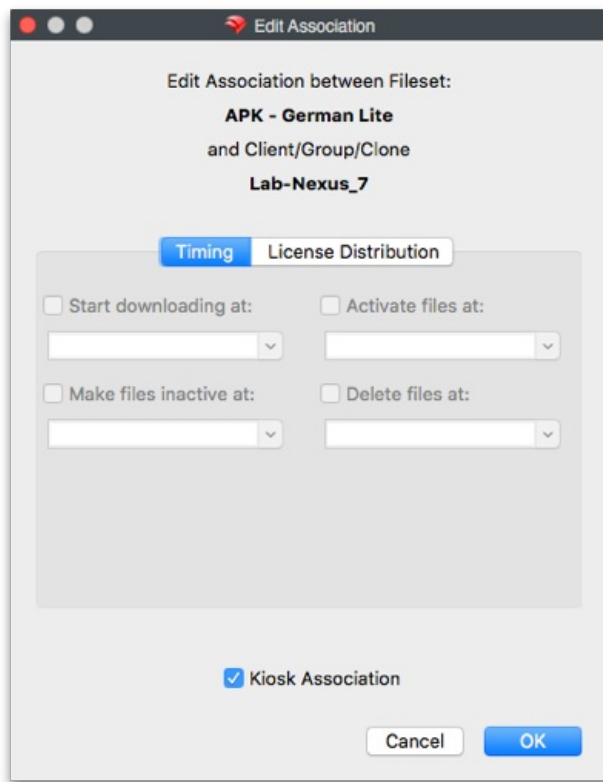
Searching and filtering the Associations window

Another powerful function is in the Search / Filter window. You can enter any text into the Search window, press Return, then choose the criteria for your view of any association that is active. Your criteria can be to look for a Fileset with that text, a client, Group or Clone, a Fileset ID, of Fileset type (such as Kiosk), or just select All Columns to let the search find every association that has that text in it no matter what it applies to.



Editing the Association

Another capability of the Associations window is the ability to edit Fileset associations. Within this functionality, you have the power to designate the deployment schedule, change the type of Fileset from standard to self-service Kiosk, and choose when the Fileset is deactivated and removed from the client.



There are two Edit windows available, depending on the type of Fileset being deployed. Most computer and Android Filesets have the ability to designate a full range of settings:

- **Start downloading at** – This tells the Client to start downloading the Fileset at a specific date and time. The Fileset will be downloaded and cached locally, but is inert; i.e., it will have no impact on the Client (other than storage space on the drive) until it is activated. This allows the FileWave administrator to pre-stage Filesets out on clients using a staggered deployment schedule prior to activation. Using a staggered schedule would allow systems administrators to minimize network traffic bottlenecks when distributing large deployment sets. This action can also be used when you have staged a Fileset that is still being tested, and there was a problem with the test results. Instead of having to reset devices, you just delete the Fileset prior to activation.
- **Activate files at** – This tells the Client when (date and time) to activate the Fileset. Installers will run, shell scripts will execute, and any files will be placed into their proper places. Since this command is only a signal to the client to have the Fileset perform its action, the network traffic is minimal.
- **Make files inactive at** – This tells the Client to locate and move all components of that Fileset back into the local cache, so that the Fileset no longer has an affect on the operation of the Client computer or device.
- **Delete files at** – This tells the Client to delete the Fileset at a specific data and time.
- **Kiosk Association** – This converts the Fileset from a standard distribution to a self-service Kiosk item. Filesets that have been distributed as standard items can be converted to Kiosk mode and vice versa.

iOS Filesets can be installed, deleted, and changed to Kiosk items. Apple iBooks can be installed by time or changed to be Kiosk items. iBooks cannot be deleted - once deployed, they are the property of the end user.

License Distribution (FW 10+)

You have the ability to designate that an Apple Volume Purchase Program "Managed Distribution" license be applied to either an Apple ID that is associated with a macOS computer or iOS device or to the device directly. This applies only to applications controlled by Apple's VPP, with the additional requirement that the application developer configured the application to support direct device assignment. You can see if the application is device assignable in the App Store under the application.

You can set a default value of User or Device assignment in FileWave Admin's Preferences, in the VPP & DEP tab, but can override the default settings on a per-Fileset basis, if both options are supported for the application in the Fileset. As you can see from the example below, one of the chosen applications has the Assign License to Device greyed out, meaning that this specific application must be assigned to a designated Apple ID, because it does not support direct device assignment.

Timing

License Distribution

Please select the license distribution model you prefer to apply for this association

☒ Assign License to User
You need an AppleID to use this model

☐ Assign License to Device
Available only for filesets and devices supporting this model.

NOTE: These options affects only VPP filesets

Timing

License Distribution

Please select the license distribution model you prefer to apply for this association

☐ Assign License to User
You need an AppleID to use this model

☒ Assign License to Device
Available only for filesets and devices supporting this model.

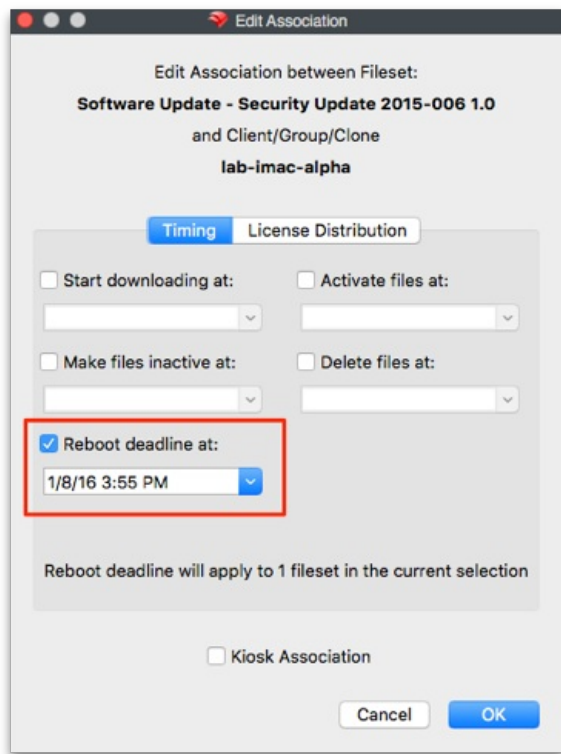
NOTE: These options affects only VPP filesets



Note: If you want to provide custom settings for deployment times to a large number of Filesets, using a Fileset Group is the best way to achieve this goal. Filesets within Fileset Groups that are associated to Clients or Client Groups will all get the same settings you designate with the Edit Association pane for that Group.

Special setting for the Requires Reboot property

When you have a Fileset, such as a system software update, that requires a reboot of the client, the user may try to cancel that update to avoid the reboot. In FW 10.1+, a feature was added to the Fileset Associations editor window that allows you to set a deadline for the reboot. This editor property can be set for a Group of Filesets, or for a single Fileset. When the deadline comes, the device will reboot automatically in order to complete the installation of the designated Fileset.



Association Tools

The tools and actions available to associations allow you to see the various aspects of the association:

- **Reveal Client/Group/Clone** – This displays and highlights the Client/Group/Clone related to this association in the upper-left portion of the window.
- **Show all Associations of this Client/Group/Clone** – This displays and highlights all associations related to the client/Group/Clone in the lower portion of window.
- **Reveal Fileset** – This displays and highlights the Fileset in the upper-right portion of window.
- **Open Fileset** – This displays the contents of the Fileset (same as double-clicking on Fileset in the Filesets view).
- **Open Fileset Report Window** – This displays the report showing the status of a Fileset, Filesets, or Fileset Group's distribution.
- **Show all Associations of this Fileset** – This displays all of the Clients associated with this Fileset
- **Delete Association(s)** – This removes the linkage between the Client/Group and the Fileset. In most cases, this will result in the Fileset contents being removed from the Client/Group. With VPP managed distribution, the license is revoked and added back to the list of available licenses.

Association Conflict Resolution

The algorithm for computing which Client receive which associations is quite complex. As a result, you may end up "double associating" a Fileset to a Client (e.g. if it is cloned into two Groups, both Groups are associated with the same Fileset). We have solved this issue by allowing only one Association-Fileset-Client chain. A Fileset can only be associated to a client via one Association. The chosen Association's commands will be followed, and all other associations ignored. The "winner" association is determined by association distance.

Association Distance

The FileWave Server resolves conflicting associations by choosing the most direct association. For example, an association directly from a Fileset to a Client is more direct than to its Group, and an association to a Client's direct parent is closer than an association to its grandparent. Clones also increase distance. Closer associations always win. Equidistant Associations are treated by ID-descending, meaning that new associations (higher ID numbers) beat older ones. This is discussed further in [Fileset Association types and precedence](#).

Smart Groups

Smart Group associations are calculated separately, following the same distance method. However, if a Client is associated by both a Smart Group and a regular association, the regular association will always win. When you view Associations, you will only see the Filesets that are directly associated with that Client or Group. Associations made to a Smart Group will not show up when viewing the Client associations and vice versa.

Imaging associations

Imaging Filesets and their associations are covered in [Network Imaging / IVS](#).

🕒Revision #2

★Created 12 July 2023 19:52:34 by Josh Levitsky

✎Updated 12 July 2023 20:30:43 by Josh Levitsky