

Restart (Windows)

What


Starting from FileWave version 14.7+ we added support for remotely rebooting a Windows system from both the Web and Native administrators.

When/Why

As an IT administrator, a remote reboot is sometimes required to address a problem or complete an installation.

How

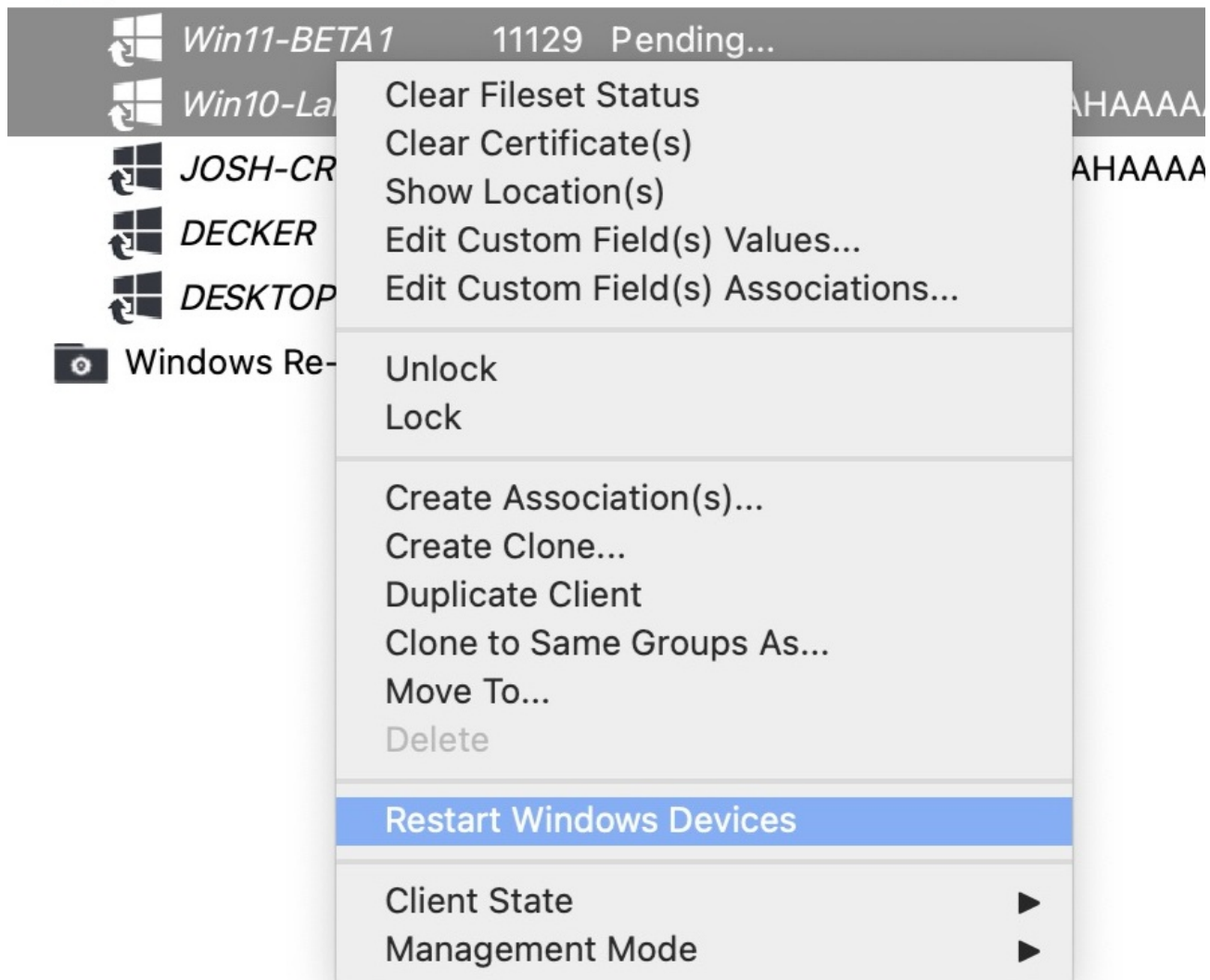
This new action can be performed from both the Web and Native admin interfaces.

 There is no "confirm" dialog when issuing the restart command. Choosing the command directly executes the restart action.

FileWave Central

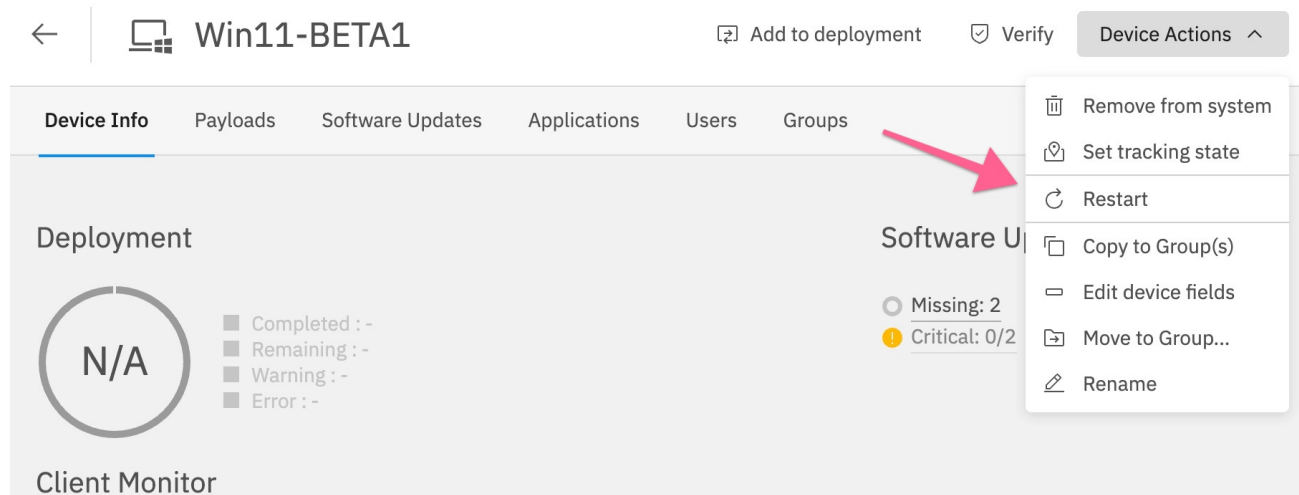
In the Native admin there is a Restart Windows Devices command that can be seen when right-clicking one or multiple devices as shown here:

▶	macOS Patching	6629
	Single App Mode	7322
▼	Windows	245



FileWave Anywhere

In the Web Admin there is a Device Action seen when viewing the details of a device:



And, from the devices view, you can also select multiple devices as shown and then Restart several at once:

	Name	Comment	User	Model	<ul style="list-style-type: none"> Show Tree List Restart Verify Edit devices fields Add to deployment
<input checked="" type="checkbox"/>	Carole-PC		carol	325	
<input type="checkbox"/>	DESKTOP-NU23JU2		JoshLevitsky	323	
<input checked="" type="checkbox"/>	Win11-BETA1		jlevitsk	326	

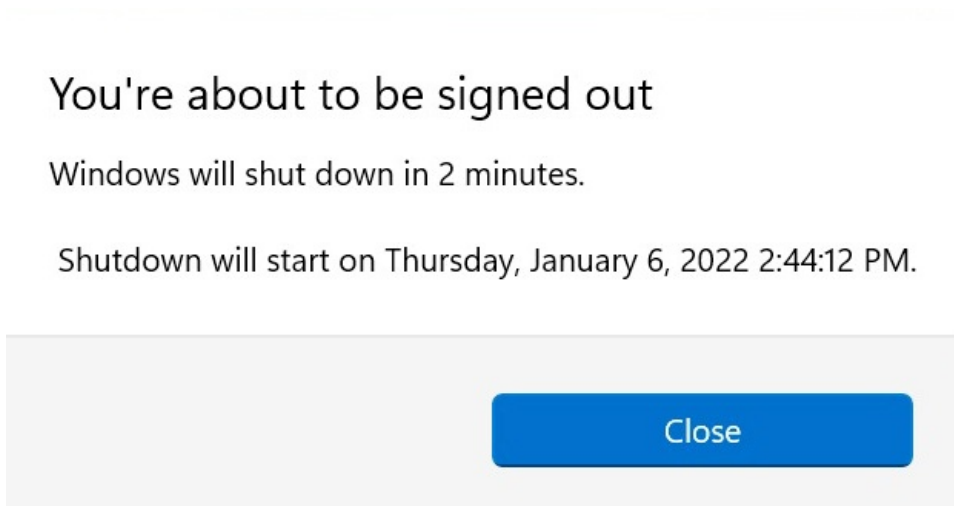
After issuing the reboot command a dialog will be seen by any logged-in user that will look similar to the first dialog below. Note that the below images are from Windows 11, and this will look slightly different on Windows 10.

You're about to be signed out

Your device administrator has scheduled a reboot



3 minutes after the first dialog appears another dialog will display similar to the below dialog. After this second warning has shown indicating that a device reboot is 2 minutes away the Windows system will reboot 2 minutes later.



↻ Revision #2
 ★ Created 10 July 2023 20:26:55 by Josh Levitsky
 ✎ Updated 24 July 2023 14:01:31 by Josh Levitsky