

# Location Tracking

- [Location Tracking Technologies](#)
- [Location Tracking Setup](#)

# Location Tracking Technologies

## FileWave Location Tracking ☐

The location reporting feature in FileWave is disabled by default. It is recommended that you; verify that this feature is per your organization's policies and AUP (Acceptable Use Policy). Notify your end users before activating location reporting, as enabling the feature will prompt for permission to access location information. For details on how this works, look here: [Location Tracking](#)

## Technologies used for Location Tracking ☐

Location tracking technologies used will differ from client platform to client platform.

## Maps used: ☐

- ThunderForest - <https://www.thunderforest.com/>

## Client location detection methods: ☐

- On macOS/Windows - <https://doc.qt.io/qt-5/location-positioning-cpp.html> which tries different sources.
- On Windows specifically - <https://learn.microsoft.com/en-gb/windows/win32/api/locationapi/nf-locationapi-ilocation-getreportstatus>
- On iOS - The iOS API for location from Apple.
- On ChromeOS - The Google API for location from Google.

## Related Content

- [Location Tracking](#)

# Location Tracking Setup

## FileWave Location Tracking

The location reporting feature in FileWave is disabled by default. It is recommended that you; verify that this feature is in accordance with your organization's policies and AUP (Acceptable Use Policy). Notify your end users before activating location reporting, as enabling the feature will prompt permission for access location information.

### Requirements:

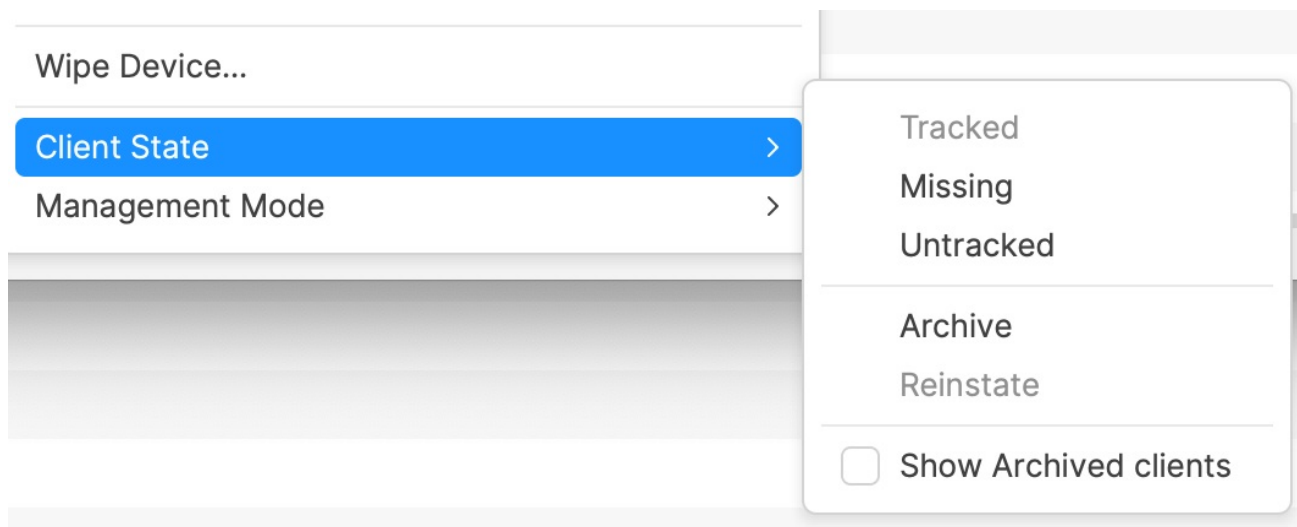
- FileWave version 10.1+
- Location Tracking Enabled - Server/Client
- iOS devices require the [FileWave IPA App Portal](#) for passive tracking
- All devices you want to track are already enrolled into FileWave and currently communicating properly

### Supported Operating Systems:

- APK Android: 4.1+
- iOS 9+
- macOS 10.9+
- Windows 10+
- ChromeOS 43+

### Things to consider:

Client State. For the items: Tracked, Missing and Untracked, the item greyed out is the active state:

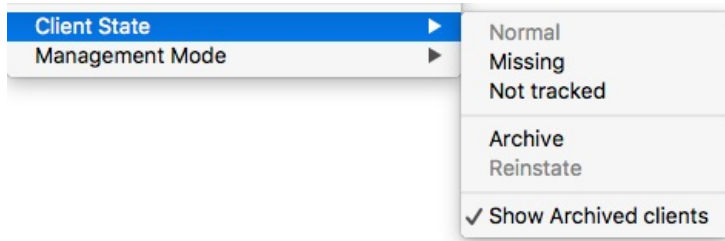


- Different States of Tracking
  - Tracked - Tracking is enabled and will update the location at different intervals
  - Missing - Tracking is enabled and will be updated around every two minutes. The client also sends the location immediately and does not wait for other scans to finish. For supervised iOS devices this option puts the device in Lost mode, has a message/footnote that can set in the FileWave Preferences under the Organization Info tab, and locks the iOS device. The device will become usable again once the missing mode is switched off.
  - Not Tracked (DEFAULT)- No location is gathered at any time.
- The FileWave IPA App Portal needs to be sent out and opened at least once before you will be prompted and allowed to gather location from the iOS device. Once it is sent out, the old FileWave App Portal that gets installed automatically with enrollment will be removed and the new one will be installed.
- For any updated location from your iOS devices, the FileWave App Portal needs to be open, whether that be in the background or the currently active app.

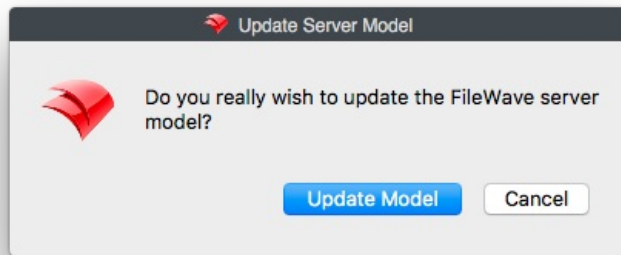
There are two types of location tracking in FileWave, Passive Tracking, and Lost Mode. macOS, Windows, Chromebooks, and Android devices use Passive tracking to gather the location of the device without locking it down. Supervised iOS devices set to Missing mode will put the device in Lost mode, which locks down the device, making it unusable by the end user.

## Lost Mode Setup (iOS macOS):

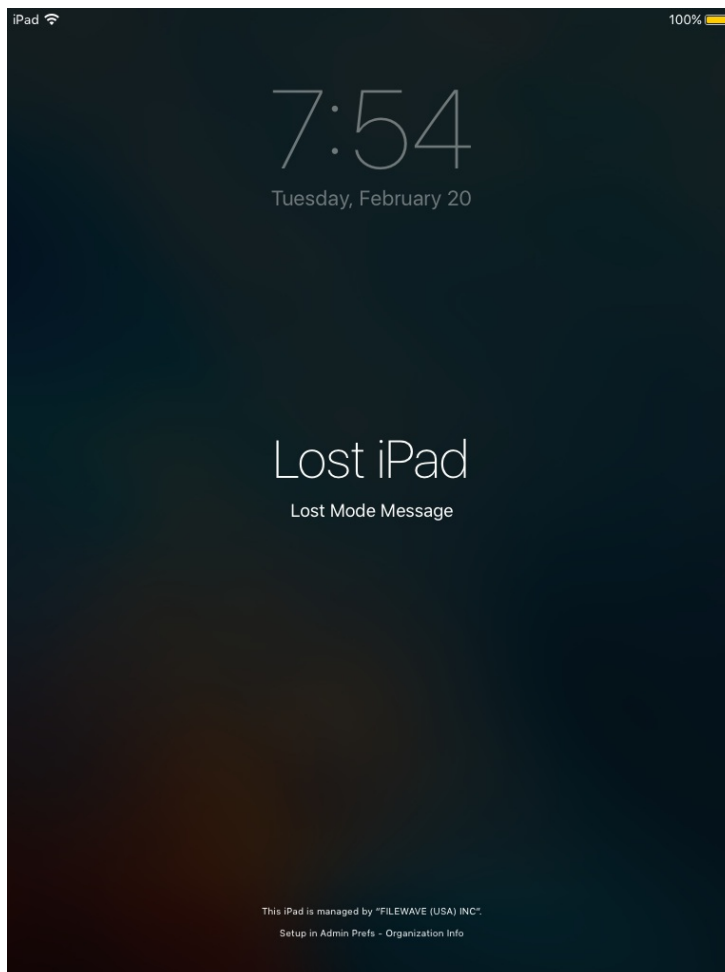
1. Right Click on your Supervised iOS or MDM-enrolled macOS device(s)
2. Select Missing from the Client State menu



3. Update Model



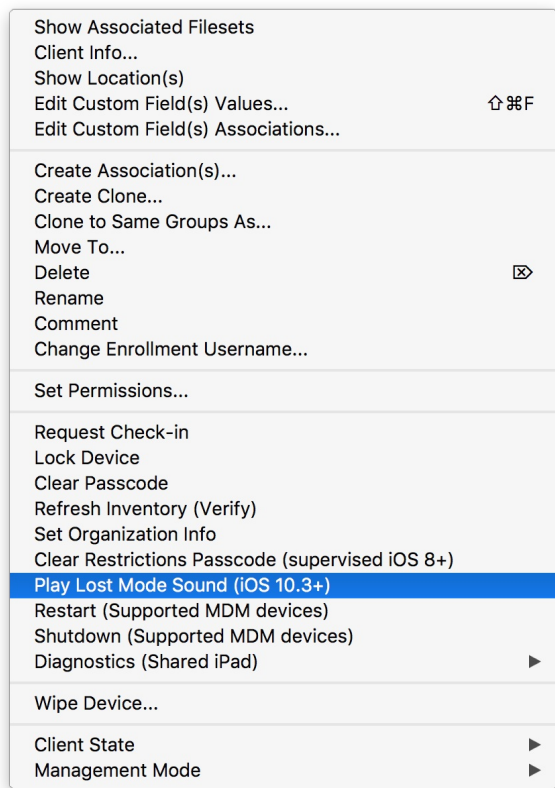
4. Once the device checks in it will be in lost mode and report location.



5. To take it out of lost mode, select "Not Tracked" in the Client State menu

✓ When the iOS device is in Lost Mode, do not reboot it. If the device loses Wifi, you will no longer be able to take the device out of Lost Mode since it will no longer be connecting to FileWave.

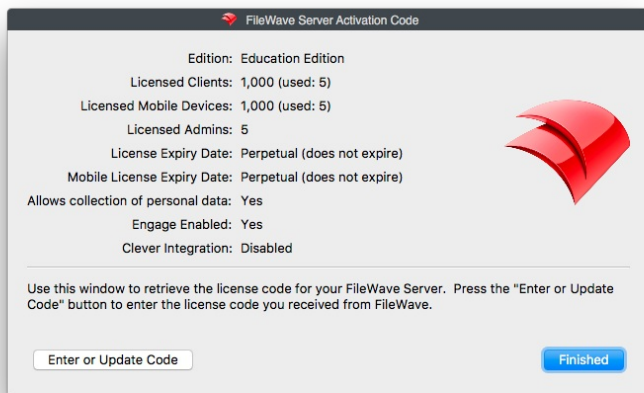
When the device is in Lost Mode, a new option in the tools menu is available, "Play Lost Mode Sound (iOS 10.3+)"



## Passive Tracking Setup

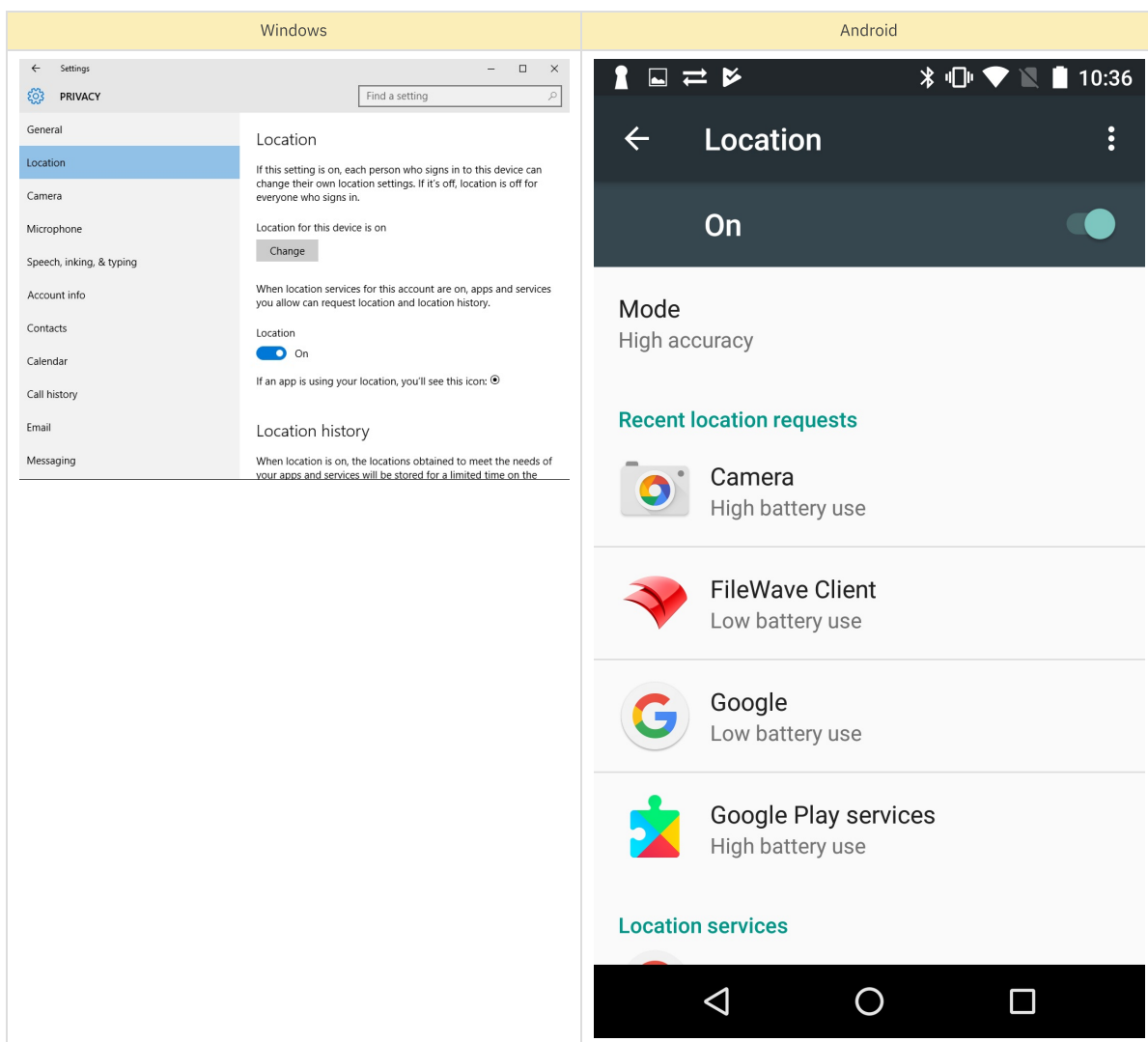
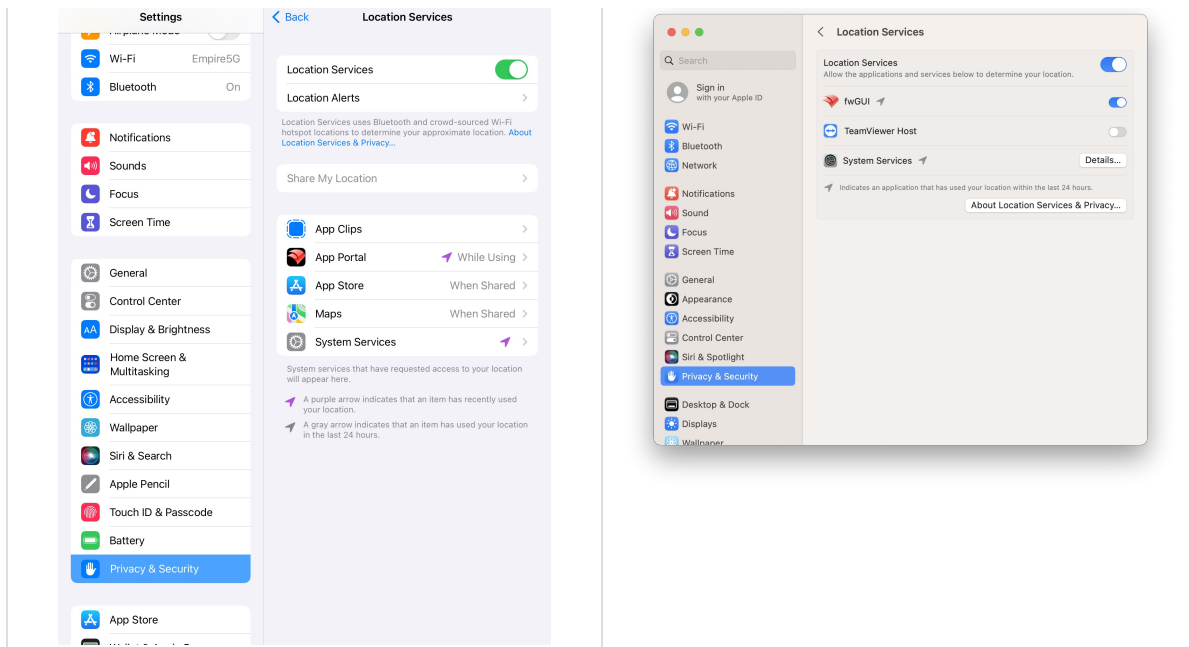
This is receiving tracking data continuously.

1. Check your server license to be sure you have "Allows collection of personal data:" set to Yes.

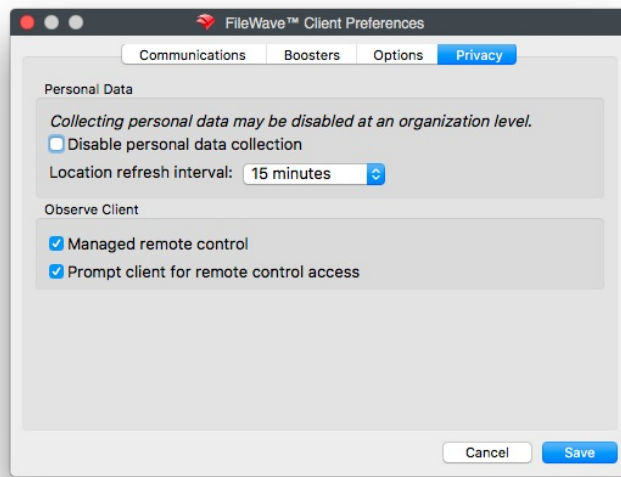


2. Make sure location services is enabled.

iOS	macOS
4:26 PM Mon Apr 10	89%



3. Prepare the clients
  1. MacOS and Windows - Be sure that "Disable Personal Data Collection" option in the client preferences of your clients is not checked.



✓ You can set the "Disable personal data collection" one at a time with Client Monitor or Create a Superprefs ([Creating a Superprefs Fileset](#)) to change them in bulk.

2. iOS - Make sure the FileWave IPA App Portal has been sent out to all your iOS devices. Recommend to deploy latest version of IPA to ensure latest security certificates embedded. (Note: IPA does not need to match your server version.)

✓ iOS devices: Can be downloaded from the [FileWave Server download page near the bottom](#)

Association Type: 

Show All

Software Update: 

Show All

License Distribution: 

All

1 Association 

9884

Search:

All Columns

Fileset

Fileset ID

Client/Group/Clone

Client/Group/Clone ID

Association ID

Type

Fileset	Client/Group/Clone	Type	Start Download	License Assignment
<div><div></div><div>iOS Enterprise - App Portal 11.2.1</div></div>	<div><div></div><div>iPads</div></div>	Standard		-

⚠ FileWave 15.3+ will auto instal the latest App for you on qualifying devices. If the App is already open, when configuring the device for tracking, it may be necessary to close and re-open the App after the device has receive the subsequent MDM commands from the Model Update.

3. Chromebook - Be sure the Chrome Extension is installed and configured (See [Quick Start Guide for Chromebooks](#))
4. Android (EMM)
  1. Force enable location tracking server side

❗ By force enabling EMM tracking you are ignoring "Allows collection of personal data" in your license. Even is the license is set to false, this will collect data.

1. Edit

```
/usr/local/filewave/django/filewave/settings_custom.py
```

2. add

```
settings.EMM['FWCLIENT_FORCE_ALL_DEVICES_TRACKING_ENABLED'] = True
```

3. Restart apache

```
/usr/local/filewave/apache/bin/apachectl restart
```

4. Update Model

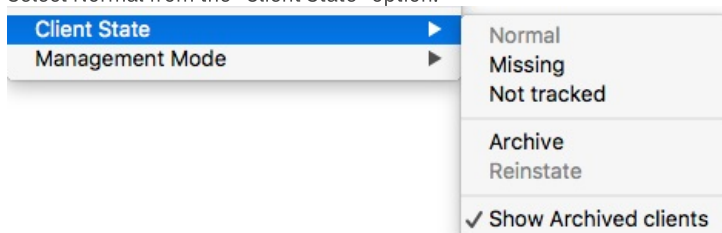
2. Force enable location services on devices (See: [Force Location for EMM Android Devices](#))

4. Change the state to Normal

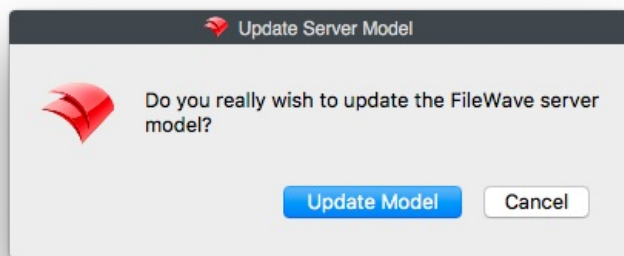
1. Right click on your macOS, Windows, Chromebook, and Android device(s)

✓ For multiple devices use the filter options at the top of the client view, then select all

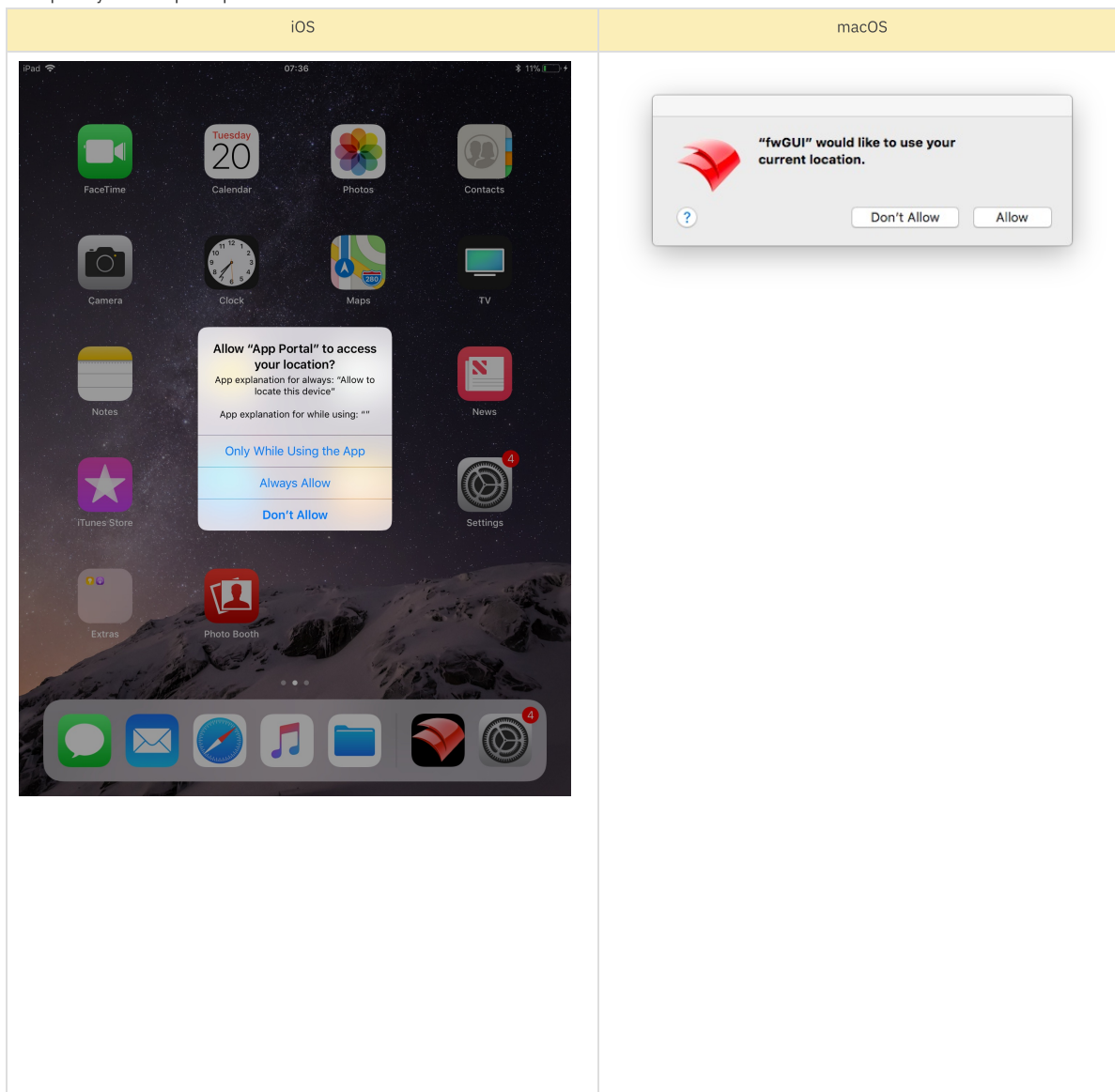
2. Select Normal from the "Client State" option.



5. Update the model




6. Accept any device prompts



7. Wait a few minutes, can potentially take up to 15 minutes. Then simply right click on your device(s) and select the Show Location(s) option to see the map below. This will be accurate within a few hundred feet for most devices.





 Warning: In order to avoid legal issues concerning user location tracking, it is highly recommended that you enable location tracking only on devices when a unique user may authorize the service.  
Privacy Policies: [Apple/iOS and macOS](#) – [Microsoft/Windows](#) – [Google/Android](#)

## Additional OS Specific Considerations

### macOS

Any user can agree to tracking, admin or not. Only an administrator can disable location services and/or FileWave's rights to location, as per [Apple Inc. policy](#).

### iOS

Any user can agree to tracking, can disable location services, and revoke FileWave's right to location, as per [Apple Inc. policy](#).

### Windows

The Windows operating system does not prompt the local user for access to location. Windows 10+ does have a location service that can be turned off.

### Android (APK Client)

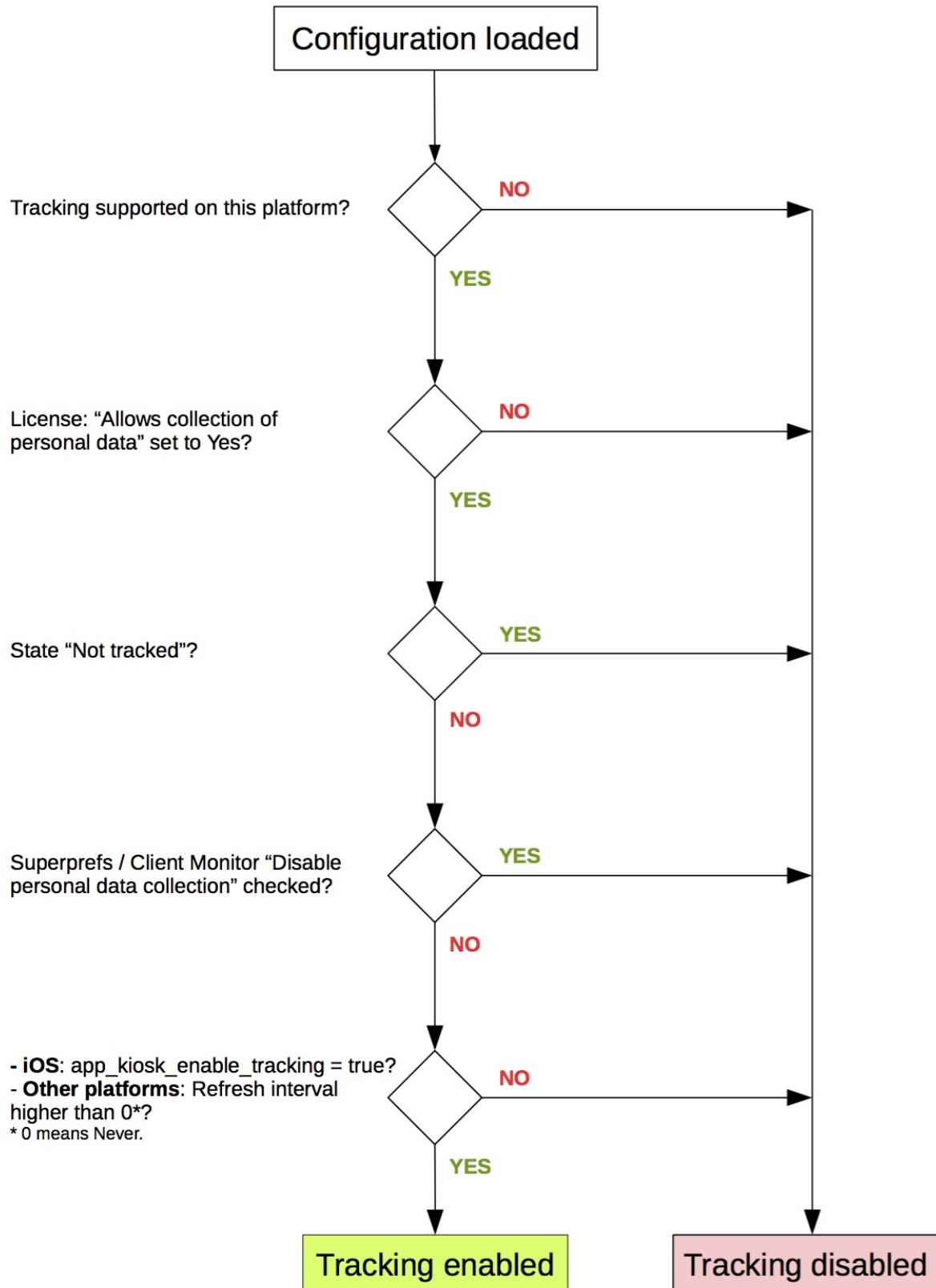
Upon installing or upgrading the Android FileWave Client to version 10.1 or greater, the user is requested to approve all rights an application needs. This includes location services, running in the background and several other rights.

### Android (EMM Client)

A user can turn off their location tracking at anytime, but you can make a policy fileset that will [Force Location for EMM Android Devices](#)

## Order of operation

It is important to note the way a client verifies it is able to ask the system for location information. For example setting the state to "Missing" but it has a Superprefs file telling it the refresh interval is 0 See the flowchart for reference:



## Global Location Reporting Disable

If there are any reasons, legal or otherwise, that you do not wish to enable tracking on a global level within your organization, your FileWave license can be adjusted to enable personal mode. This will disable devices from sending application usage as well as location information.

To verify the current status of personal data collection. From FileWave Admin: Server Menu → "Activation Code..." → There you will see "Allow collection of personal data:" with Yes or No after it.

To have personal data enabled or disabled on your license, please submit a support ticket with "Personal data License" in the subject.



Only tickets from authorized support agents whose names are on the support contract will be accepted to adjust license personal data settings.