

Manually enrolling a device into FileWave Windows MDM

What

Windows MDM allows you to manually enroll a device based on appropriate Microsoft Entra ID credentials.

When/Why

Enrolling a device in this manner isn't scalable. You would probably never use this method for a production rollout, but it is exceptionally handy to test your initial configuration to ensure you can enroll. And it doesn't have the AutoPilot complexity added.

How

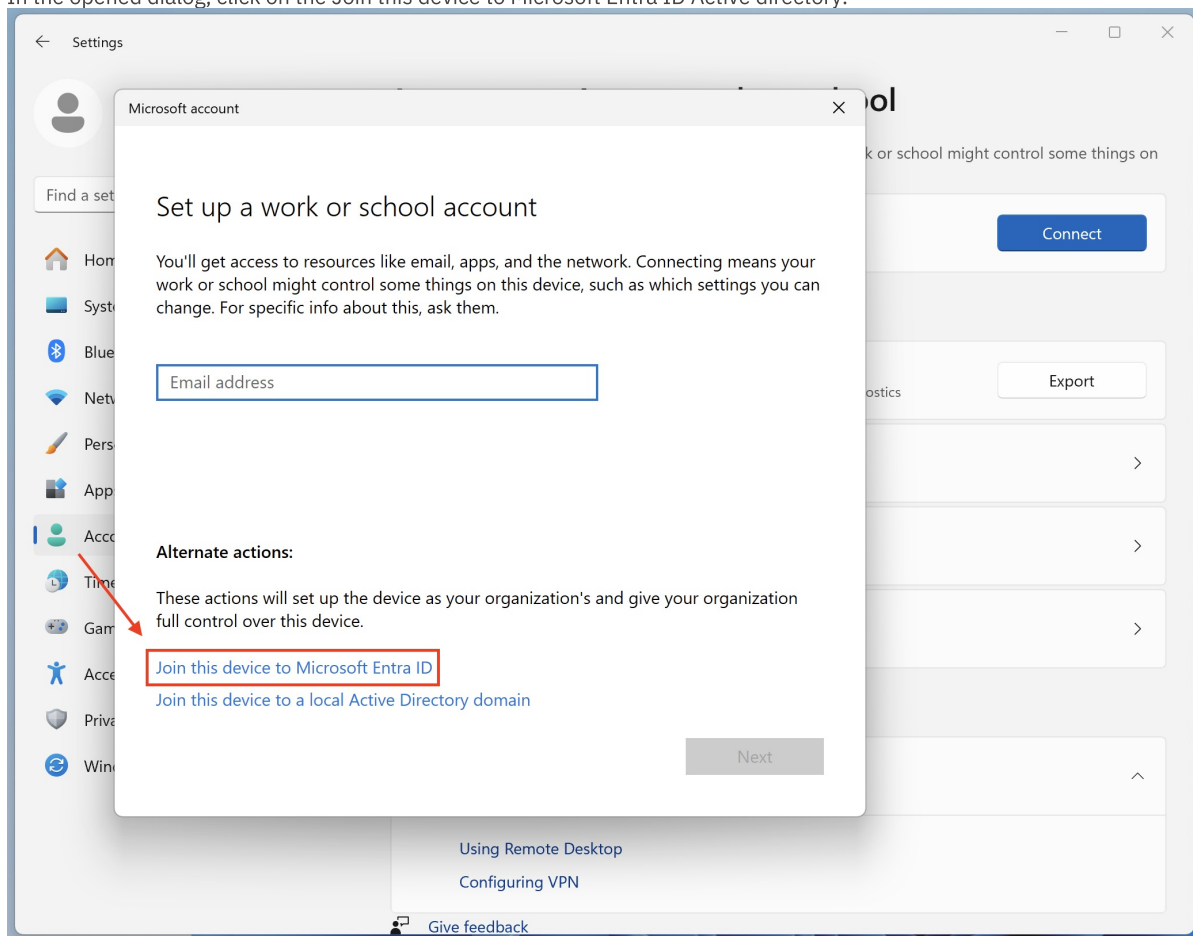
Manual Device Enrollment

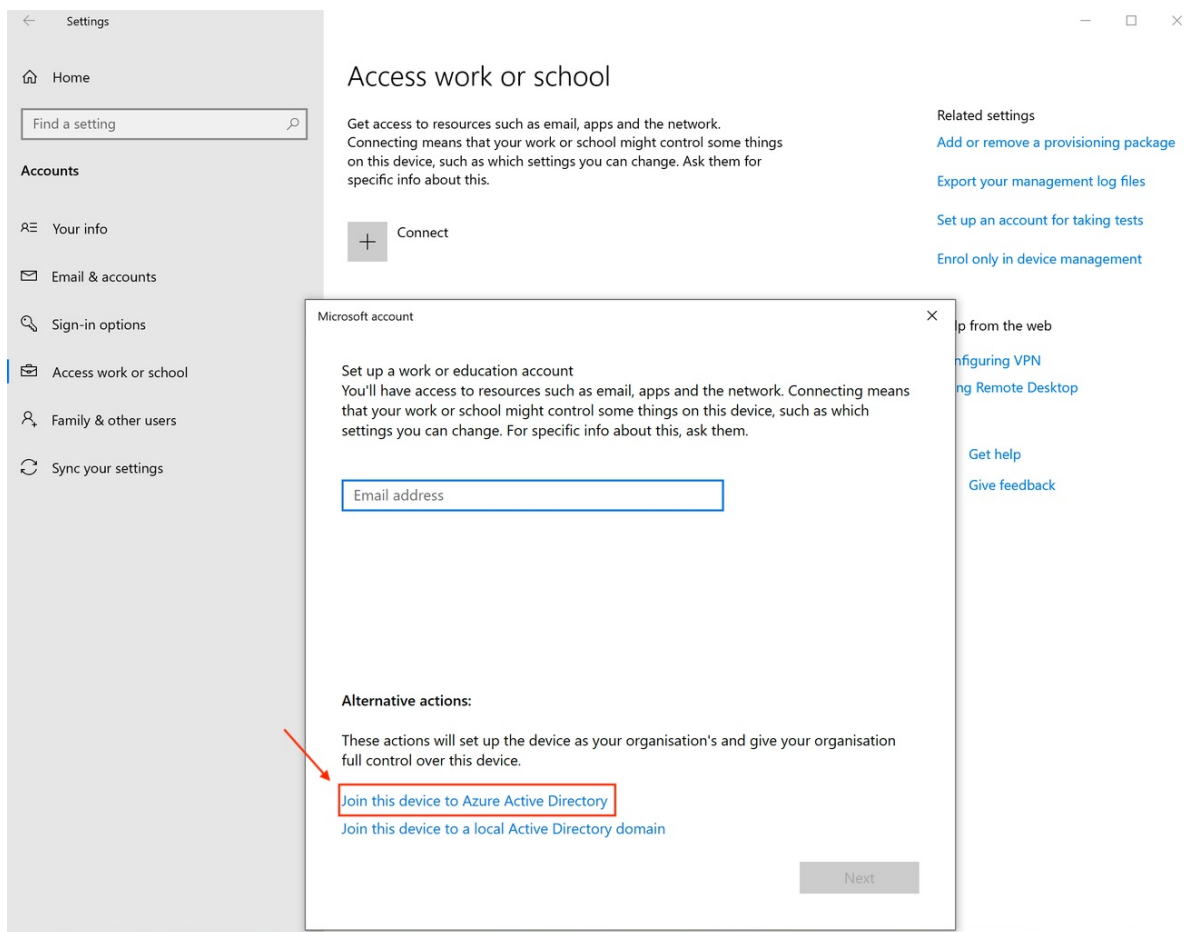
At this point, the hard part of the setup of the link between FileWave and Microsoft Entra is behind us, and we just simply have to enroll our devices. These steps are similar for both new (not previously enrolled in FileWave) and existing (via fwcl) FileWave clients.

Make sure your client can communicate with your server (you can ping server, correct ports are opened on firewall, etc.)

Also make sure you are not using Windows Home or Starter editions because they do not allow you to bind them to Microsoft Entra in this way.

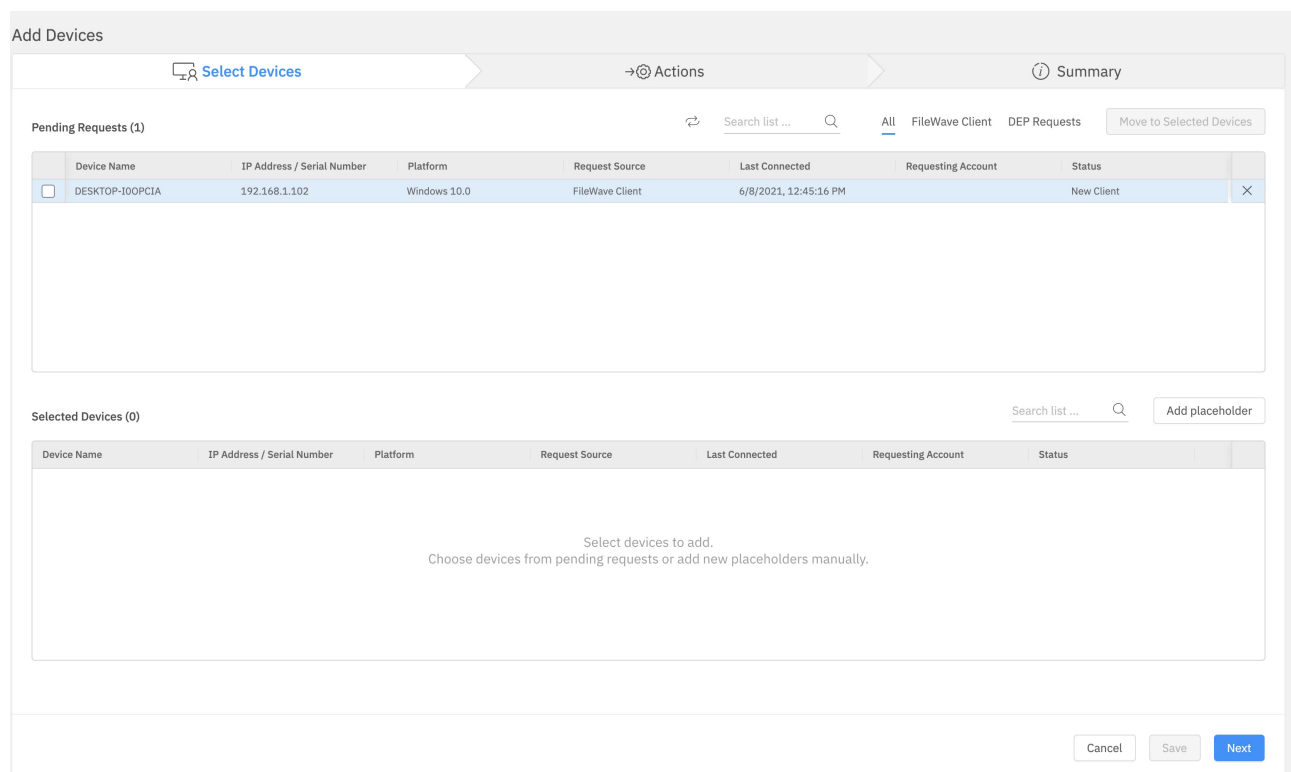
1. Navigate to Settings → Accounts → Access work or school
2. Click on Connect button
3. In the opened dialog, click on the Join this device to Microsoft Entra ID Active directory.





4. From here, just enter your Microsoft Entra credentials (as the user who wants to enroll their device) and follow the steps in the wizard until you're done.
5. You can verify the details of the MDM enrollment by clicking on the new account and opening Info.

If your device is newly enrolled, after a few minutes, you should be able to see the client show up as new on the FileWave Serve. Add it to your server.



Existing FileWave clients will not show up as a new client. They simply are updated to the new version.

You can verify if a device is truly MDM enrolled by checking the enrollment type in device info in Native Admin, as seen below:

DESKTOP-I0OPCIA - Client Info

Last Connected: 08.06.21 12:47

From: 192.168.1.102

Free Space: 40.4 GB

Platform: Windows 10.0

Model: 2

Version: Not connected

Enrollment Type: Enrollment via AZURE AD

Export Current Tab

Client Monitor

Get Log

Verify

Tools

Filesets Status

Device Details

Users

Policies

Edit Custom Field(s) Values...

Filter Device Details

Property	Value	Last Update Time	Status
Archived			
Building			
Client ID	217		
Client Name	DESKTOP-I0OPCIA		
Content Caching Enabled	false		
CPU Count	2		
CPU Speed	2.7 GHz		
CPU Type	Intel(R) Core(TM) i7-9750H CPU @ 2.60GHz		
Created by conflict resolution	false		
Current Upstream Host	ehsanmbp.fwx.one		
Current Upstream Port	20017		
Date of Last Enterprise App Validation			
Date of Last State Change	08.06.21 12:45		
Deleted from admin	false		
Department			
Device ID	3ab7088b31f65dc998aa48c8e25c190ce9554b9a		
Device Manufacturer	VMware, Inc.		
Device Name	DESKTOP-I0OPCIA		

Revision #4

★Created 15 June 2023 16:06:02 by Andrew Kloosterhuis

✎Updated 2 August 2024 19:29:39 by Andrew Kloosterhuis