

Microsoft Windows Package Manager (WinGet)


Microsoft winget is a new command line driven interface to access the msstore repository. It works very similarly to something like apt-get if you have ever used that in a Linux environment. In FileWave 15.4 we have introduced direct integration with WinGet to make software deployments easier.

- [Microsoft WinGet Overview](#)
- [Finding packages in the WinGet Repository](#)
- [Installing a package with WinGet](#)
- [Upgrading a package with WinGet](#)
- [Uninstalling a package with WinGet](#)
- [Troubleshooting Errors with WinGet](#)

Microsoft WinGet Overview

What

Microsoft Windows Package Manager, known as WinGet, is a tool that simplifies discovering, installing, upgrading, and configuring software packages on Windows 10 and 11. It operates through a command-line interface, enabling efficient software management. Integrating WinGet with FileWave allows administrators to leverage WinGet's capabilities within the FileWave ecosystem, enhancing software deployment and management across Windows devices. This integration streamlines IT operations, reduces manual effort, and ensures consistent software configurations across all managed Windows devices.

 Note that FileWave 15.4 or later is required.

When/Why

Deploying applications available via Microsoft Winget was already possible using FileWave, but it originally required script manipulation and some steps to set up properly. FileWave 15.4 introduces a much simpler way to deploy applications to Windows devices.

How

Welcome to the new WinGet Fileset: A new search assistant allows you to create a WinGet Fileset by searching for the name of the application you want to deploy.

- WinGet will be automatically installed or updated if required
- With FileWave 15.4.0, the most recent package will always be installed at initial deployment
- You can define if the package will be upgraded at verify if a new version is available
- You can define if the package will be uninstalled if the association is removed - in case the package allows silent uninstallation

To get started just follow these steps:

- [Finding packages in the WinGet repository](#)
- [Installing a package with WinGet](#)
- [Upgrading a package with WinGet](#)
- [Uninstalling a package with WinGet](#)

Related Content

- [Troubleshooting Errors with WinGet](#)
- [Desktop Filesets](#)

Finding packages in the WinGet Repository

What

WinGet is a command line tool to manage applications on the Windows platform.

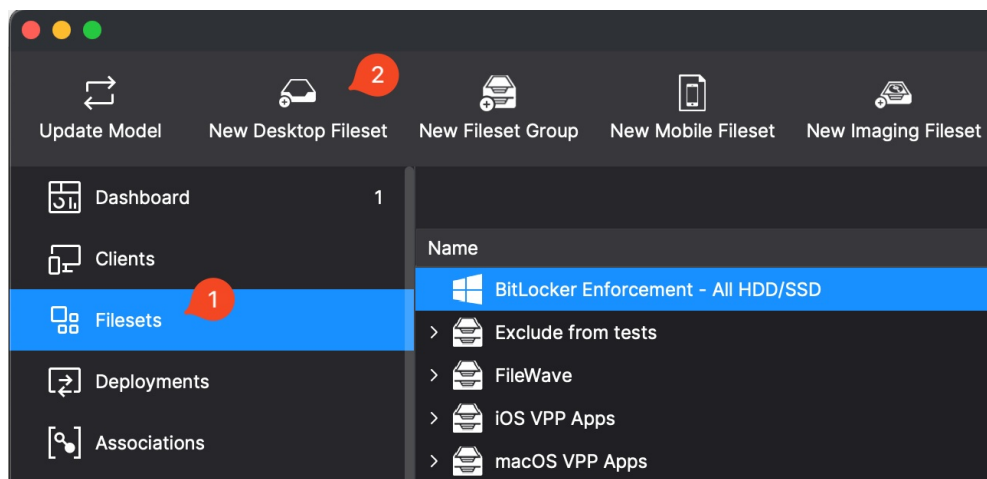
Note that FileWave 15.4 or later is required.

When/Why

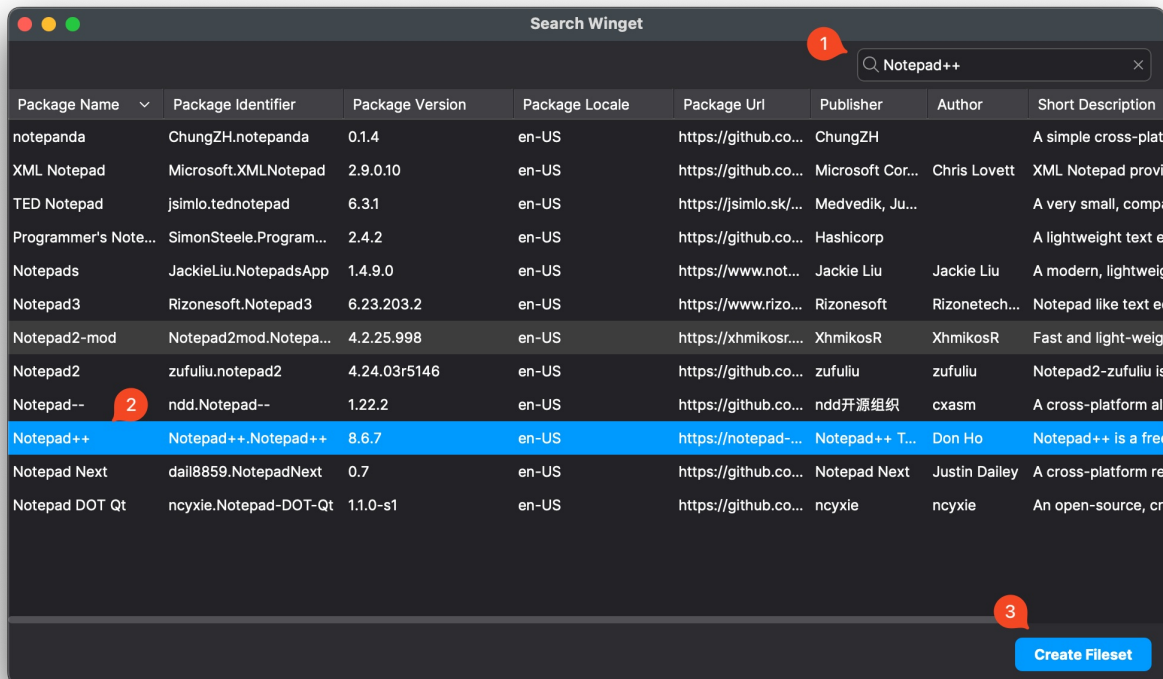
WinGet will install software. But, to do so, we'll need to see if the package we are looking for is in the repository.

How

In FileWave Central click on "New Desktop Fileset" when in the Filesets window and then pick "Winget" as the type of Fileset.



The results will show as below, and what we are most interested in is the unique identifier (Id):



In our case, since we want Notepad++ to deploy. Clicking Create Fileset will make it.

Installing a package with WinGet

What

WinGet is a command line tool to manage applications on the Windows 10 and 11 platform.

 Note that FileWave 15.4 or later is required.

When/Why


We'll certainly want to use WinGet to push software to our devices, and we can do that rather nicely in a FileWave Fileset/Payload.

 Similarly to other platforms where installs are coming directly from a CDN source, any software installed in this method will bypass FileWave Boosters since the content is coming straight from the internet.

How

In our previous article, we looked at how we can find and uniquely identify a specific package to install ([here](#)). Once we have something that we want to deploy, it is rather simple to install an application, as you'll see.

You can now create an [Association](#) or [Deployment](#) to distribute it. That's all there is to it.

 Note that some applications may have icons deployed and some may not deploy icons in all the same places like Start Menu, Desktop, etc. It's up to the application publisher to select these things.

Consider reading [Upgrading a package with WinGet](#) and [Uninstalling a package with WinGet](#) as you step in to the full lifecycle of software installs.

If you run into an error, there is information in [Troubleshooting Errors with WinGet](#) to help understand the error codes.

Upgrading a package with WinGet

What

WinGet is a command line tool to manage applications on the Windows platform.

Note that FileWave 15.4 or later is required.

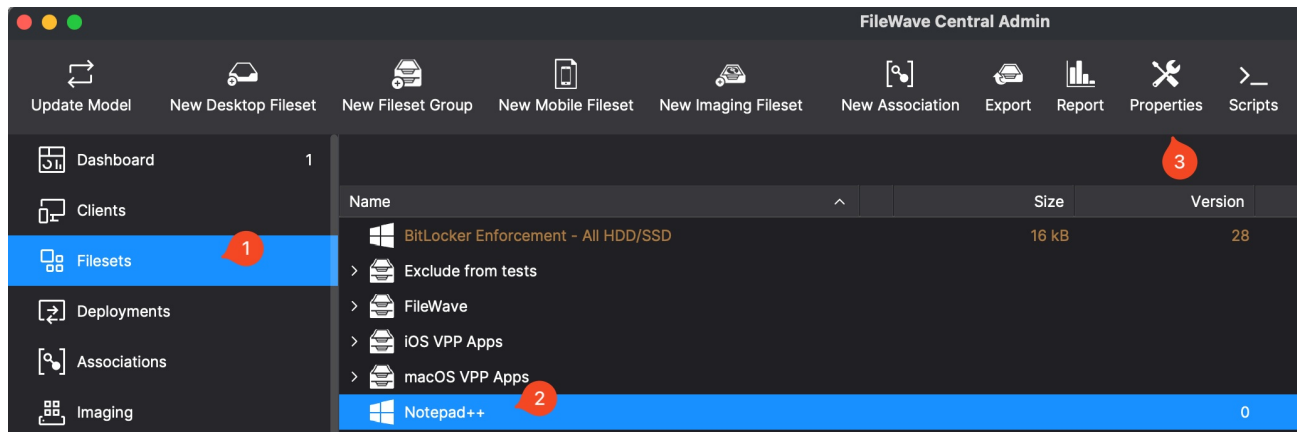
When/Why

Of course, installing a package is only the beginning. After we initially install any package, we'll have to come back from time to time to update that application for security and feature updates.

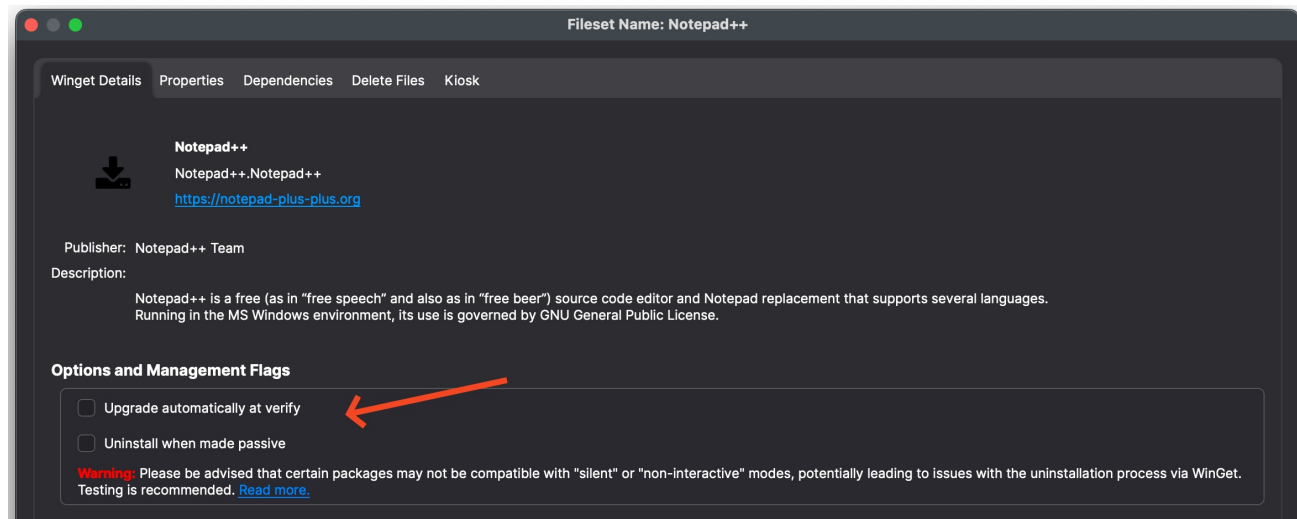
Similarly to other platforms where installs are coming directly from a CDN source, any software installed in this method will bypass FileWave Boosters since the content is coming straight from the internet.

How

Now that the Fileset is created you can consider the possible settings. Clicking the Fileset and then Properties in the toolbar will bring you to the possible settings.



Below is the properties dialog for the Fileset.



Things to consider on the properties dialog:

- Name - Is it the name you expected?
- URL - The publisher of the software. Go there and confirm it is what you expected.
- Upgrade automatically at verify - Do you want the system to check for an update every 24 hours and install it at system boot?

If you check the Upgrade automatically at verify it will always update to the latest version of the application when it releases. Most people will probably want this checked.

Uninstalling a package with WinGet

What

WinGet is a command line tool to manage applications on the Windows 10 and 11 platform.

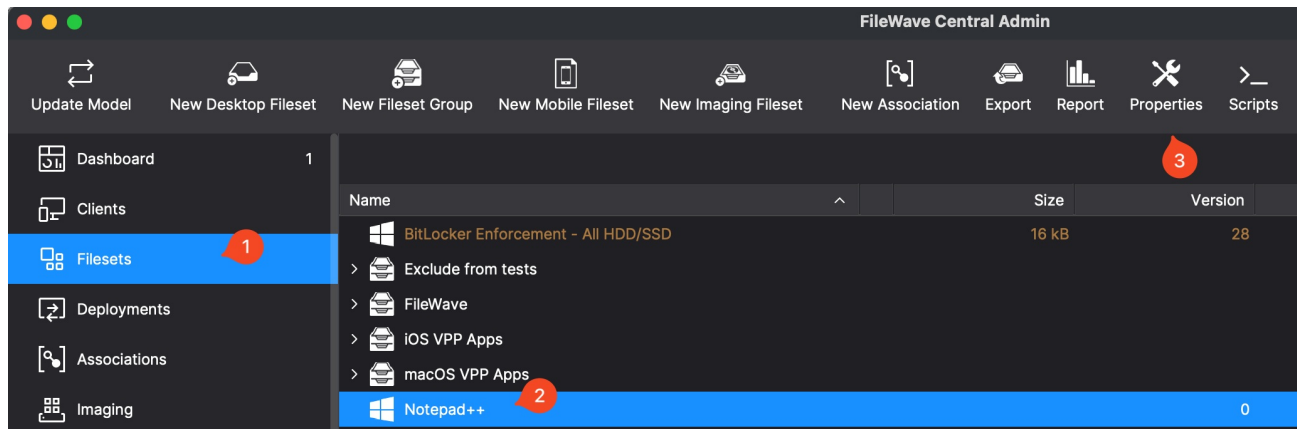
Note that FileWave 15.4 or later is required.

When/Why

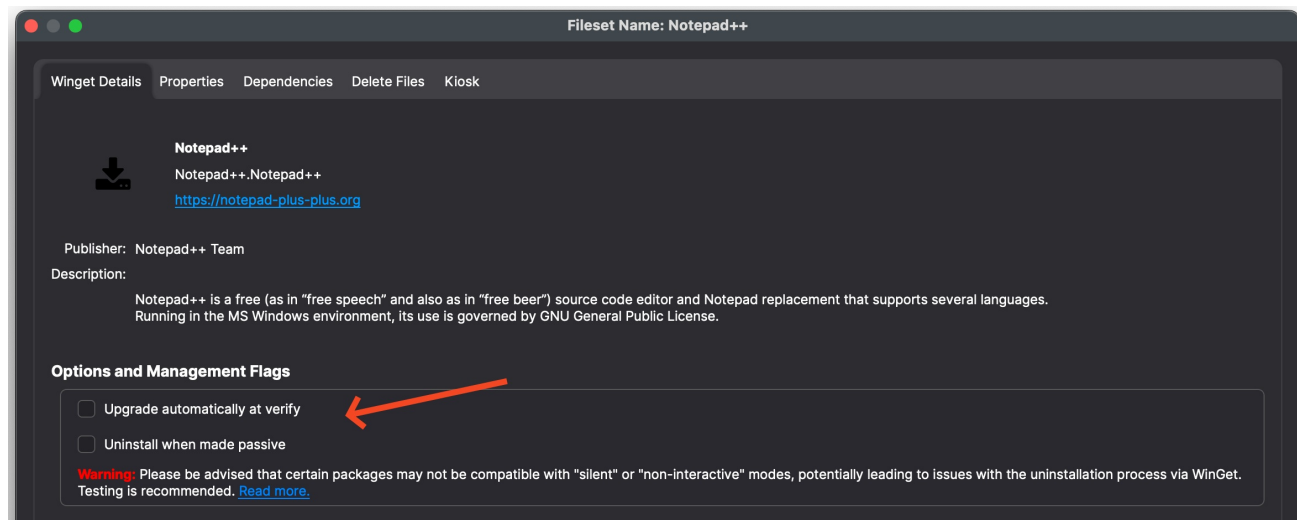
After we initially install any package, we most likely will have reason to uninstall it at some point...and we can use this very practically in a pre or post-uninstall script within a payload/fileset.

How

The process for removing a package is very similar to our installation and upgrade code, and equally simple. We'll use WinGet to remove a previously installed package. Clicking the Fileset and then Properties in the toolbar will bring you to the settings which will control if a WinGet application is removed by breaking the Association or Deployment.



Below is the properties dialog for the Fileset.



Things to consider on the properties dialog:

- Name - Is it the name you expected?
- URL - The publisher of the software. Go there and confirm it is what you expected.
- Uninstall when made passive - Do you want it to uninstall when the Association or Deployment is removed? Checking this box will make it so that if the Association or Deployment is removed in the future, the software should silently uninstall.

Keep in mind that some software does not silently uninstall so you should always test if you are going to enable this option. The uninstall functionality is up to the software vendor to implement properly. What our testing has found, though, is that the uninstall will only be "silent" if the 3rd party includes a QuietUninstallString in

HKLM/Software/Microsoft/Windows/CurrentVersion/Uninstall. In the case of Firefox, Mozilla provides no such string...they only provide an UninstallString, which does prompt. So, "silent" in this case is not silent. As always, testing of these items before production rollout is always recommended.

Digging Deeper

You may be asking yourself can I make the uninstall silent if it isn't? Yes, probably. In the case of Firefox for instance, the uninstall string calls an executable called helper.exe. That executable, though, when run with a /S flag, will actually uninstall the application silently. So the command to do this could be placed into an Activation script on a separate Fileset to accomplish it instead of using the WinGet command if you find you need to solve for this.

Troubleshooting Errors with WinGet

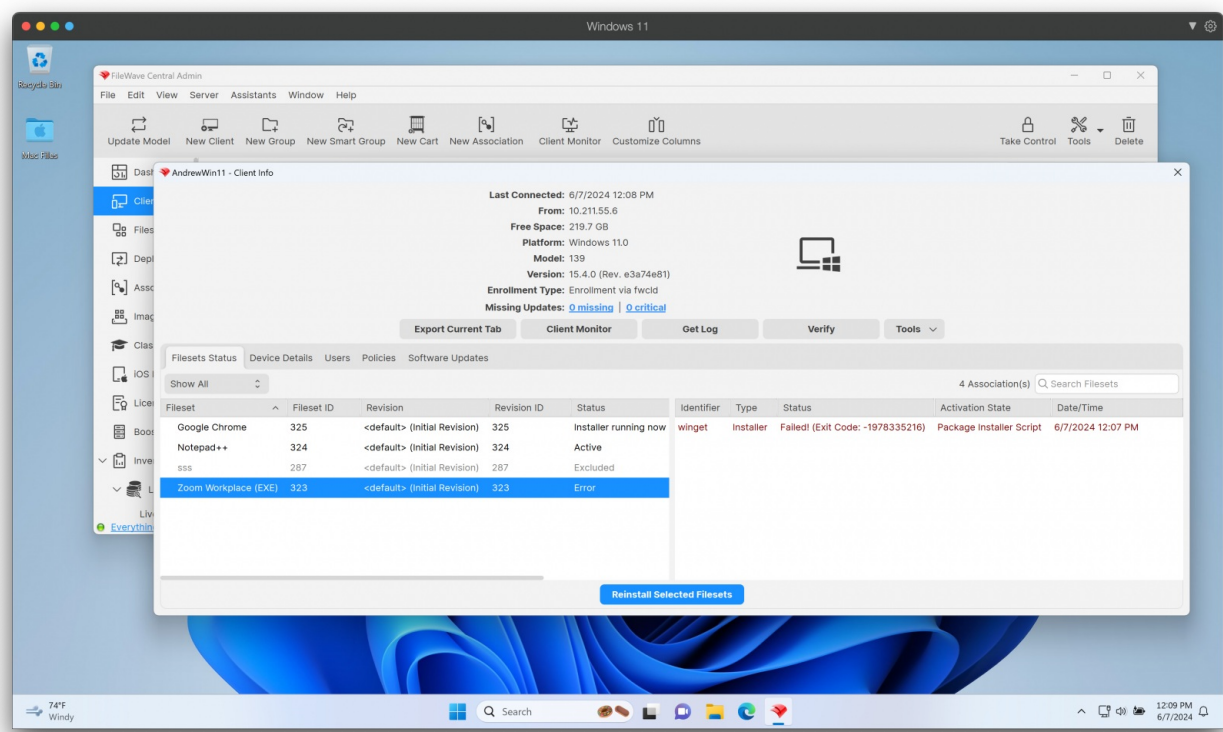
What

WinGet is a command line tool to manage applications on the Windows 10 and 11 platform.

Note that FileWave 15.4 or later is required.

When/Why

After we initially install any package there may be an error. This will offer some reasons for those errors.



How

Microsoft provides some documentation on error codes. They are pasted below but also a link to them is included in [Related Content](#) below the tables.

Return Codes

General Errors

Hex	Decimal	Symbol	Description
0x8A150001	-1978335231	APPINSTALLER_CLI_ERROR_INTERNAL_ERROR	Internal Error
0x8A150002	-1978335230	APPINSTALLER_CLI_ERROR_INVALID_COMMAND_LINE_ARGUMENTS	Invalid command line arguments
0x8A150003	-1978335229	APPINSTALLER_CLI_ERROR_COMMAND_FAILED	Executing command failed
0x8A150004	-1978335228	APPINSTALLER_CLI_ERROR_MANIFEST_FAILED	Opening manifest failed
0x8A150005	-1978335227	APPINSTALLER_CLI_ERROR_CANCELLATION_SIGNAL_RECEIVED	Cancellation signal received
0x8A150006	-1978335226	APPINSTALLER_CLI_ERROR_SHELL_EXECUTE_FAILED	Running ShellExecute failed

0x8A150007	-1978335225	APPINSTALLER_CLI_ERROR_UNSPORTED_MANIFESTVERSION	Cannot process manifest. The manifest version is higher than supported. Please update the client.
0x8A150008	-1978335224	APPINSTALLER_CLI_ERROR_DOWNLOAD_FAILED	Downloading installer failed
0x8A150009	-1978335223	APPINSTALLER_CLI_ERROR_CANNOT_WRITE_TO_UPLEVEL_INDEX	Cannot write to index; it is a higher schema version
0x8A15000A	-1978335222	APPINSTALLER_CLI_ERROR_INDEX_INTEGRITY_COMPROMISED	The index is corrupt
0x8A15000B	-1978335221	APPINSTALLER_CLI_ERROR_SOURCES_INVALID	The configured source information is corrupt
0x8A15000C	-1978335220	APPINSTALLER_CLI_ERROR_SOURCE_NAME_ALREADY_EXISTS	The source name is already configured
0x8A15000D	-1978335219	APPINSTALLER_CLI_ERROR_INVALID_SOURCE_TYPE	The source type is invalid
0x8A15000E	-1978335218	APPINSTALLER_CLI_ERROR_PACKAGE_IS_BUNDLE	The MSIX file is a bundle, not a package
0x8A15000F	-1978335217	APPINSTALLER_CLI_ERROR_SOURCE_DATA_MISSING	Data required by the source is missing
0x8A150010	-1978335216	APPINSTALLER_CLI_ERROR_NO_APPLICABLE_INSTALLER	None of the installers are applicable for the current system
0x8A150011	-1978335215	APPINSTALLER_CLI_ERROR_INSTALLER_HASH_MISMATCH	The installer file's hash does not match the manifest
0x8A150012	-1978335214	APPINSTALLER_CLI_ERROR_SOURCE_NAME_DOES_NOT_EXIST	The source name does not exist
0x8A150013	-1978335213	APPINSTALLER_CLI_ERROR_SOURCE_ARG_ALREADY_EXISTS	The source location is already configured under another name
0x8A150014	-1978335212	APPINSTALLER_CLI_ERROR_NO_APPLICATIONS_FOUND	No packages found
0x8A150015	-1978335211	APPINSTALLER_CLI_ERROR_NO_SOURCES_DEFINED	No sources are configured
0x8A150016	-1978335210	APPINSTALLER_CLI_ERROR_MULTIPLE_APPLICATIONS_FOUND	Multiple packages found matching the criteria
0x8A150017	-1978335209	APPINSTALLER_CLI_ERROR_NO_MANIFEST_FOUND	No manifest found matching the criteria
0x8A150018	-1978335208	APPINSTALLER_CLI_ERROR_EXTENSION_PUBLIC_FAILED	Failed to get Public folder from source package
0x8A150019	-1978335207	APPINSTALLER_CLI_ERROR_COMMAND_REQUIRES_ADMIN	Command requires administrator privileges to run
0x8A15001A	-1978335206	APPINSTALLER_CLI_ERROR_SOURCE_NOT_SECURE	The source location is not secure
0x8A15001B	-1978335205	APPINSTALLER_CLI_ERROR_MSISTORE_BLOCKED_BY_POLICY	The Microsoft Store client is blocked by policy
0x8A15001C	-1978335204	APPINSTALLER_CLI_ERROR_MSISTORE_APP_BLOCKED_BY_POLICY	The Microsoft Store app is blocked by policy
0x8A15001D	-1978335203	APPINSTALLER_CLI_ERROR_EXPERIMENTAL_FEATURE_DISABLED	The feature is currently under development. It can be enabled using winget settings.
0x8A15001E	-1978335202	APPINSTALLER_CLI_ERROR_MSISTORE_INSTALL_FAILED	Failed to install the Microsoft Store app
0x8A15001F	-1978335201	APPINSTALLER_CLI_ERROR_COMPLETION_INPUT_BAD	Failed to perform auto complete
0x8A150020	-1978335200	APPINSTALLER_CLI_ERROR_YAML_INIT_FAILED	Failed to initialize YAML parser
0x8A150021	-1978335199	APPINSTALLER_CLI_ERROR_YAML_INVALID_MAPPING_KEY	Encountered an invalid YAML key
0x8A150022	-1978335198	APPINSTALLER_CLI_ERROR_YAML_DUPLICATE_MAPPING_KEY	Encountered a duplicate YAML key
0x8A150023	-1978335197	APPINSTALLER_CLI_ERROR_YAML_INVALID_OPERATION	Invalid YAML operation
0x8A150024	-1978335196	APPINSTALLER_CLI_ERROR_YAML_DOC_BUILD_FAILED	Failed to build YAML doc
0x8A150025	-1978335195	APPINSTALLER_CLI_ERROR_YAML_INVALID_EMITTER_STATE	Invalid YAML emitter state
0x8A150026	-1978335194	APPINSTALLER_CLI_ERROR_YAML_INVALID_DATA	Invalid YAML data
0x8A150027	-1978335193	APPINSTALLER_CLI_ERROR_LIBYAML_ERROR	LibYAML error

0x8A150028	-1978335192	APPINSTALLER_CLI_ERROR_MANIFEST_VALIDATION_WARNING	Manifest validation succeeded with warning
0x8A150029	-1978335191	APPINSTALLER_CLI_ERROR_MANIFEST_VALIDATION_FAILURE	Manifest validation failed
0x8A15002A	-1978335190	APPINSTALLER_CLI_ERROR_INVALID_ID_MANIFEST	Manifest is invalid
0x8A15002B	-1978335189	APPINSTALLER_CLI_ERROR_UPDATE_NOT_APPLICABLE	No applicable update found
0x8A15002C	-1978335188	APPINSTALLER_CLI_ERROR_UPDATE_ALL_HAS_FAILURE	winget upgrade --all completed with failures
0x8A15002D	-1978335187	APPINSTALLER_CLI_ERROR_INSTALLER_SECURITY_CHECK_FAILED	Installer failed security check
0x8A15002E	-1978335186	APPINSTALLER_CLI_ERROR_DOWNLOAD_SIZE_MISMATCH	Download size does not match expected content length
0x8A15002F	-1978335185	APPINSTALLER_CLI_ERROR_NO_UNINSTALL_INFO_FOUND	Uninstall command not found
0x8A150030	-1978335184	APPINSTALLER_CLI_ERROR_EXECUTE_UNINSTALL_COMMAND_FAILED	Running uninstall command failed
0x8A150031	-1978335183	APPINSTALLER_CLI_ERROR_ICU_BREAK_ITERATOR_ERROR	ICU break iterator error
0x8A150032	-1978335182	APPINSTALLER_CLI_ERROR_ICU_CASEMAP_ERROR	ICU casemap error
0x8A150033	-1978335181	APPINSTALLER_CLI_ERROR_ICU_REGEX_ERROR	ICU regex error
0x8A150034	-1978335180	APPINSTALLER_CLI_ERROR_IMPORT_INSTALL_FAILED	Failed to install one or more imported packages
0x8A150035	-1978335179	APPINSTALLER_CLI_ERROR_NOT_ALL_PACKAGES_FOUND	Could not find one or more requested packages
0x8A150036	-1978335178	APPINSTALLER_CLI_ERROR_JSON_INVALID_FILE	Json file is invalid
0x8A150037	-1978335177	APPINSTALLER_CLI_ERROR_SOURCE_NOT_REMOTE	The source location is not remote
0x8A150038	-1978335176	APPINSTALLER_CLI_ERROR_UNSUPPORTED_RESTSOURCE	The configured rest source is not supported
0x8A150039	-1978335175	APPINSTALLER_CLI_ERROR_RESTSOURCE_INVALID_DATA	Invalid data returned by rest source
0x8A15003A	-1978335174	APPINSTALLER_CLI_ERROR_BLOCKED_BY_POLICY	Operation is blocked by Group Policy
0x8A15003B	-1978335173	APPINSTALLER_CLI_ERROR_REST_API_INTERNAL_ERROR	Rest API internal error
0x8A15003C	-1978335172	APPINSTALLER_CLI_ERROR_RESTSOURCE_INVALID_URL	Invalid rest source url
0x8A15003D	-1978335171	APPINSTALLER_CLI_ERROR_REST_API_UNSUPPORTED_MIME_TYPE	Unsupported MIME type returned by rest API
0x8A15003E	-1978335170	APPINSTALLER_CLI_ERROR_RESTSOURCE_INVALID_VERSION	Invalid rest source contract version
0x8A15003F	-1978335169	APPINSTALLER_CLI_ERROR_SOURCE_DATA_INTEGRITY_FAILURE	The source data is corrupted or tampered
0x8A150040	-1978335168	APPINSTALLER_CLI_ERROR_STREAM_READ_FAILURE	Error reading from the stream
0x8A150041	-1978335167	APPINSTALLER_CLI_ERROR_PACKAGE_AGREEMENTS_NOT_ACCEPTED	Package agreements were not agreed to
0x8A150042	-1978335166	APPINSTALLER_CLI_ERROR_PROMPT_INPUT_ERROR	Error reading input in prompt
0x8A150043	-1978335165	APPINSTALLER_CLI_ERROR_UNSUPPORTED_SOURCE_REQUEST	The search request is not supported by one or more sources
0x8A150044	-1978335164	APPINSTALLER_CLI_ERROR_REST_API_ENDPOINT_NOT_FOUND	The rest API endpoint is not found.
0x8A150045	-1978335163	APPINSTALLER_CLI_ERROR_SOURCE_OPEN_FAILED	Failed to open the source.
0x8A150046	-1978335162	APPINSTALLER_CLI_ERROR_SOURCE_AGREEMENTS_NOT_ACCEPTED	Source agreements were not agreed to
0x8A150047	-1978335161	APPINSTALLER_CLI_ERROR_CUSTOM_HEADER_EXCEEDS_MAXLENGTH	Header size exceeds the allowable limit of 1024 characters. Please reduce the size and try again.
0x8A150048	-1978335160	APPINSTALLER_CLI_ERROR_MISSING_RESOURCE_FILE	Missing resource file
0x8A150049	-1978335159	APPINSTALLER_CLI_ERROR_MSI_INSTALL_FAILED	Running MSI install failed

0x8A15004A	-1978335158	APPINSTALLER_CLI_ERROR_INVALID_ID_MSIEEXEC_ARGUMENT	Arguments for msieexec are invalid
0x8A15004B	-1978335157	APPINSTALLER_CLI_ERROR_FAILED_TO_OPEN_ALL_SOURCES	Failed to open one or more sources
0x8A15004C	-1978335156	APPINSTALLER_CLI_ERROR_DEPENDENCIES_VALIDATION_FAILED	Failed to validate dependencies
0x8A15004D	-1978335155	APPINSTALLER_CLI_ERROR_MISSING_PACKAGE	One or more package is missing
0x8A15004E	-1978335154	APPINSTALLER_CLI_ERROR_INVALID_ID_TABLE_COLUMN	Invalid table column
0x8A15004F	-1978335153	APPINSTALLER_CLI_ERROR_UPGRADE_VERSION_NOT_NEWER	The upgrade version is not newer than the installed version
0x8A150050	-1978335152	APPINSTALLER_CLI_ERROR_UPGRADE_VERSION_UNKNOWN	Upgrade version is unknown and override is not specified
0x8A150051	-1978335151	APPINSTALLER_CLI_ERROR_ICU_CONVERSION_ERROR	ICU conversion error
0x8A150052	-1978335150	APPINSTALLER_CLI_ERROR_PORTABLE_INSTALL_FAILED	Failed to install portable package
0x8A150053	-1978335149	APPINSTALLER_CLI_ERROR_PORTABLE_REPARSE_POINT_NOT_SUPPORTED	Volume does not support reparse points.
0x8A150054	-1978335148	APPINSTALLER_CLI_ERROR_PORTABLE_PACKAGE_ALREADY_EXISTS	Portable package from a different source already exists.
0x8A150055	-1978335147	APPINSTALLER_CLI_ERROR_PORTABLE_SYMLINK_PATH_IS_DIRECTORY	Unable to create symlink, path points to a directory.
0x8A150056	-1978335146	APPINSTALLER_CLI_ERROR_INSTALLER_PROHIBITS_ELEVATION	The installer cannot be run from an administrator context.
0x8A150057	-1978335145	APPINSTALLER_CLI_ERROR_PORTABLE_UNINSTALL_FAILED	Failed to uninstall portable package
0x8A150058	-1978335144	APPINSTALLER_CLI_ERROR_ARP_VERSION_VALIDATION_FAILED	Failed to validate DisplayVersion values against index.
0x8A150059	-1978335143	APPINSTALLER_CLI_ERROR_UNSUPPORTED_ARGUMENT	One or more arguments are not supported.
0x8A15005A	-1978335142	APPINSTALLER_CLI_ERROR_BIND_WITH_EMBEDDED_NULL	Embedded null characters are disallowed for SQLite
0x8A15005B	-1978335141	APPINSTALLER_CLI_ERROR_NESTED_INSTALLER_NOT_FOUND	Failed to find the nested installer in the archive.
0x8A15005C	-1978335140	APPINSTALLER_CLI_ERROR_EXTRACT_ARCHIVE_FAILED	Failed to extract archive.
0x8A15005D	-1978335139	APPINSTALLER_CLI_ERROR_NESTED_INSTALLER_INVALID_PATH	Invalid relative file path to nested installer provided.
0x8A15005E	-1978335138	APPINSTALLER_CLI_ERROR_PINNED_CERTIFICATE_MISMATCH	The server certificate did not match any of the expected values.
0x8A15005F	-1978335137	APPINSTALLER_CLI_ERROR_INSTALL_LOCATION_REQUIRED	Install location must be provided.
0x8A150060	-1978335136	APPINSTALLER_CLI_ERROR_ARCHIVE_SCAN_FAILED	Archive malware scan failed.
0x8A150061	-1978335135	APPINSTALLER_CLI_ERROR_PACKAGE_ALREADY_INSTALLED	Found at least one version of the package installed.
0x8A150062	-1978335134	APPINSTALLER_CLI_ERROR_PIN_ALREADY_EXISTS	A pin already exists for the package.
0x8A150063	-1978335133	APPINSTALLER_CLI_ERROR_PIN_DOES_NOT_EXIST	There is no pin for the package.
0x8A150064	-1978335132	APPINSTALLER_CLI_ERROR_CANNOT_OPEN_PINNING_INDEX	Unable to open the pin database.
0x8A150065	-1978335131	APPINSTALLER_CLI_ERROR_MULTIPLE_INSTALL_FAILED	One or more applications failed to install
0x8A150066	-1978335130	APPINSTALLER_CLI_ERROR_MULTIPLE_UNINSTALL_FAILED	One or more applications failed to uninstall
0x8A150067	-1978335129	APPINSTALLER_CLI_ERROR_NOT_A_LL_QUERIES_FOUND_SINGLE	One or more queries did not return exactly one match
0x8A150068	-1978335128	APPINSTALLER_CLI_ERROR_PACKAGE_IS_PINNED	The package has a pin that prevents upgrade.
0x8A150069	-1978335127	APPINSTALLER_CLI_ERROR_PACKAGE_IS_STUB	The package currently installed is the stub package
0x8A15006A	-1978335126	APPINSTALLER_CLI_ERROR_APPLICATION_SHUTDOWN_SIGNAL_RECEIVED	Application shutdown signal received

0x8A15006B	-1978335125	APPINSTALLER_CLI_ERROR_DOWN LOAD_DEPENDENCIES	Failed to download package dependencies.
0x8A15006C	-1978335124	APPINSTALLER_CLI_ERROR_DOWN LOAD_COMMAND_PROHIBITED	Failed to download package. Download for offline installation is prohibited.
0x8A15006D	-1978335123	APPINSTALLER_CLI_ERROR_SERVI CE_UNAVAILABLE	A required service is busy or unavailable. Try again later.
0x8A15006E	-1978335122	APPINSTALLER_CLI_ERROR_RESU ME_ID_NOT_FOUND	The guid provided does not correspond to a valid resume state.
0x8A15006F	-1978335121	APPINSTALLER_CLI_ERROR_CLIEN T_VERSION_MISMATCH	The current client version did not match the client version of the saved state.
0x8A150070	-1978335120	APPINSTALLER_CLI_ERROR_INVAL ID_RESUME_STATE	The resume state data is invalid.
0x8A150071	-1978335119	APPINSTALLER_CLI_ERROR_CANN OT_OPEN_CHECKPOINT_INDEX	Unable to open the checkpoint database.
0x8A150072	-1978335118	APPINSTALLER_CLI_ERROR_RESU ME_LIMIT_EXCEEDED	Exceeded max resume limit.
0x8A150073	-1978335117	APPINSTALLER_CLI_ERROR_INVAL ID_AUTHENTICATION_INFO	Invalid authentication info.
0x8A150074	-1978335116	APPINSTALLER_CLI_ERROR_AUTHE NTICATION_TYPE_NOT_SUPPORTE D	Authentication method not supported.
0x8A150075	-1978335115	APPINSTALLER_CLI_ERROR_AUTHE NTICATION_FAILED	Authentication failed.
0x8A150076	-1978335114	APPINSTALLER_CLI_ERROR_AUTHE NTICATION_INTERACTIVE_REQUIR ED	Authentication failed. Interactive authentication required.
0x8A150077	-1978335113	APPINSTALLER_CLI_ERROR_AUTHE NTICATION_CANCELLED_BY_USER	Authentication failed. User cancelled.
0x8A150078	-1978335112	APPINSTALLER_CLI_ERROR_AUTHE NTICATION_INCORRECT_ACCOUNT	Authentication failed. Authenticated account is not the desired account.
0x8A150079	-1978335111	APPINSTALLER_CLI_ERROR_NO_RE PAIR_INFO_FOUND	Repair command not found.
0x8A15007A	-1978335110	APPINSTALLER_CLI_ERROR_REPAI R_NOT_APPLICABLE	Repair operation is not applicable.
0x8A15007B	-1978335109	APPINSTALLER_CLI_ERROR_EXEC_ REPAIR_FAILED	Repair operation failed.
0x8A15007C	-1978335108	APPINSTALLER_CLI_ERROR_REPAI R_NOT_SUPPORTED	The installer technology in use doesn't support repair.
0x8A15007D	-1978335107	APPINSTALLER_CLI_ERROR_ADMIN _CONTEXT_REPAIR_PROHIBITED	Repair operations involving administrator privileges are not permitted on packages installed within the user scope.
0x8A15007E	-1978335106	APPINSTALLER_CLI_ERROR_SQLIT E_CONNECTION_TERMINATED	The SQLite connection was terminated to prevent corruption.
0x8A15007F	-1978335105	APPINSTALLER_CLI_ERROR_DISPL AYCATALOG_API_FAILED	Failed to get Microsoft Store package catalog.
0x8A150080	-1978335104	APPINSTALLER_CLI_ERROR_NO_AP PLICABLE_DISPLAYCATALOG_PACK AGE	No applicable Microsoft Store package found from Microsoft Store package catalog.
0x8A150081	-1978335103	APPINSTALLER_CLI_ERROR_SFSC LIENT_API_FAILED	Failed to get Microsoft Store package download information.
0x8A150082	-1978335102	APPINSTALLER_CLI_ERROR_NO_AP PLICABLE_SFSCCLIENT_PACKAGE	No applicable Microsoft Store package download information found.
0x8A150083	-1978335101	APPINSTALLER_CLI_ERROR_LICEN SING_API_FAILED	Failed to retrieve Microsoft Store package license.

Install errors

Hex	Decimal	Symbol	Description
0x8A150101	-1978334975	APPINSTALLER_CLI_ERROR_INSTA LL_PACKAGE_IN_USE	Application is currently running. Exit the application then try again.
0x8A150102	-1978334974	APPINSTALLER_CLI_ERROR_INSTA LL_INSTALL_IN_PROGRESS	Another installation is already in progress. Try again later.
0x8A150103	-1978334973	APPINSTALLER_CLI_ERROR_INSTA LL_FILE_IN_USE	One or more file is being used. Exit the application then try again.
0x8A150104	-1978334972	APPINSTALLER_CLI_ERROR_INSTA LL_MISSING_DEPENDENCY	This package has a dependency missing from your system.
0x8A150105	-1978334971	APPINSTALLER_CLI_ERROR_INSTA	There's no more space on your PC.

		LL_DISK_FULL	Make space, then try again.
0x8A150106	-1978334970	APPINSTALLER_CLI_ERROR_INSTALL_INSUFFICIENT_MEMORY	There's not enough memory available to install. Close other applications then try again.
0x8A150107	-1978334969	APPINSTALLER_CLI_ERROR_INSTALL_NO_NETWORK	This application requires internet connectivity. Connect to a network then try again.
0x8A150108	-1978334968	APPINSTALLER_CLI_ERROR_INSTALL_CONTACT_SUPPORT	This application encountered an error during installation. Contact support.
0x8A150109	-1978334967	APPINSTALLER_CLI_ERROR_INSTALL_REBOOT_REQUIRED_TO_FINISH	Restart your PC to finish installation.
0x8A15010A	-1978334966	APPINSTALLER_CLI_ERROR_INSTALL_REBOOT_REQUIRED_TO_INSTALL	
Installation failed. Restart your PC then try again.			
0x8A15010B	-1978334965	APPINSTALLER_CLI_ERROR_INSTALL_REBOOT_INITIATED	Your PC will restart to finish installation.
0x8A15010C	-1978334964	APPINSTALLER_CLI_ERROR_INSTALL_CANCELLED_BY_USER	You cancelled the installation.
0x8A15010D	-1978334963	APPINSTALLER_CLI_ERROR_INSTALL_ALREADY_INSTALLED	Another version of this application is already installed.
0x8A15010E	-1978334962	APPINSTALLER_CLI_ERROR_INSTALL_DOWNGRADE	A higher version of this application is already installed.
0x8A15010F	-1978334961	APPINSTALLER_CLI_ERROR_INSTALL_BLOCKED_BY_POLICY	Organization policies are preventing installation. Contact your admin.
0x8A150110	-1978334960	APPINSTALLER_CLI_ERROR_INSTALL_DEPENDENCIES	Failed to install package dependencies.
0x8A150111	-1978334959	APPINSTALLER_CLI_ERROR_INSTALL_PACKAGE_IN_USE_BY_APPLICATION	Application is currently in use by another application.
0x8A150112	-1978334958	APPINSTALLER_CLI_ERROR_INSTALL_INVALID_PARAMETER	Invalid parameter.
0x8A150113	-1978334957	APPINSTALLER_CLI_ERROR_INSTALL_SYSTEM_NOT_SUPPORTED	Package not supported by the system.
0x8A150114	-1978334956	APPINSTALLER_CLI_ERROR_INSTALL_UPGRADE_NOT_SUPPORTED	The installer does not support upgrading an existing package.

Check for package installed status

Hex	Decimal	Symbol	Description
0x8A150201	-1978334719	WINGET_INSTALLED_STATUS_ARP_ENTRY_NOT_FOUND	The Apps and Features Entry for the package could not be found.
0x8A150202	-1978334718	WINGET_INSTALLED_STATUS_INSTALL_LOCATION_NOT_APPLICABLE	The install location is not applicable.
0x8A150203	-1978334717	WINGET_INSTALLED_STATUS_INSTALL_LOCATION_NOT_FOUND	The install location could not be found.
0x8A150204	-1978334716	WINGET_INSTALLED_STATUS_FILE_HASH_MISMATCH	The hash of the existing file did not match.
0x8A150205	-1978334715	WINGET_INSTALLED_STATUS_FILE_NOT_FOUND	File not found.
0x8A150206	-1978334714	WINGET_INSTALLED_STATUS_FILE_FOUND_WITHOUT_HASH_CHECK	The file was found but the hash was not checked.
0x8A150207	-1978334713	WINGET_INSTALLED_STATUS_FILE_ACCESS_ERROR	The file could not be accessed.

Configuration Errors

Hex	Decimal	Symbol	Description
0x8A15C001	-1978286079	WINGET_CONFIG_ERROR_INVALID_CONFIGURATION_FILE	The configuration file is invalid.
0x8A15C002	-1978286078	WINGET_CONFIG_ERROR_INVALID_YAML	The YAML syntax is invalid.
0x8A15C003	-1978286077	WINGET_CONFIG_ERROR_INVALID_FIELD_TYPE	A configuration field has an invalid type.
0x8A15C004	-1978286076	WINGET_CONFIG_ERROR_UNKNOWN_CONFIGURATION_FILE_VERSION	The configuration has an unknown version.
0x8A15C005	-1978286075	WINGET_CONFIG_ERROR_SOFT_APP	An error occurred while applying the

0x8A15C005	-1978286075	WINGET_CONFIG_ERROR_ALREADY_FAILED	An error occurred while applying the configuration.
0x8A15C006	-1978286074	WINGET_CONFIG_ERROR_DUPLICATE_IDENTIFIER	The configuration contains a duplicate identifier.
0x8A15C007	-1978286073	WINGET_CONFIG_ERROR_MISSING_DEPENDENCY	The configuration is missing a dependency.
0x8A15C008	-1978286072	WINGET_CONFIG_ERROR_DEPENDENCY_UNSATISFIED	The configuration has an unsatisfied dependency.
0x8A15C009	-1978286071	WINGET_CONFIG_ERROR_ASSERTION_FAILED	An assertion for the configuration unit failed.
0x8A15C00A	-1978286070	WINGET_CONFIG_ERROR_MANUALLY_SKIPPED	The configuration was manually skipped.
0x8A15C00B	-1978286069	WINGET_CONFIG_ERROR_WARNING_NOT_ACCEPTED	A warning was thrown and the user declined to continue execution.
0x8A15C00C	-1978286068	WINGET_CONFIG_ERROR_SET_DEPENDENCY_CYCLE	The dependency graph contains a cycle which cannot be resolved.
0x8A15C00D	-1978286067	WINGET_CONFIG_ERROR_INVALID_FIELD_VALUE	The configuration has an invalid field value.
0x8A15C00E	-1978286066	WINGET_CONFIG_ERROR_MISSING_FIELD	The configuration is missing a field.
0x8A15C00F	-1978286065	WINGET_CONFIG_ERROR_TEST_FAILED	Some of the configuration units failed while testing their state.
0x8A15C010	-1978286064	WINGET_CONFIG_ERROR_TEST_NOT_RUN	Configuration state was not tested.
0x8A15C011	-1978286063	WINGET_CONFIG_ERROR_GET_FAILED	The configuration unit failed getting its properties.

Configuration Processor Errors

Hex	Decimal	Symbol	Description
0x8A15C101	-1978285823	WINGET_CONFIG_ERROR_UNIT_NOT_INSTALLED	The configuration unit was not installed.
0x8A15C102	-1978285822	WINGET_CONFIG_ERROR_UNIT_NOT_FOUND_REPOSITORY	The configuration unit could not be found.
0x8A15C103	-1978285821	WINGET_CONFIG_ERROR_UNIT_MULTIPLE_MATCHES	Multiple matches were found for the configuration unit specify the module to select the correct one.
0x8A15C104	-1978285820	WINGET_CONFIG_ERROR_UNIT_INVOKE_GET	The configuration unit failed while attempting to get the current system state.
0x8A15C105	-1978285819	WINGET_CONFIG_ERROR_UNIT_INVOKE_TEST	The configuration unit failed while attempting to test the current system state.
0x8A15C106	-1978285818	WINGET_CONFIG_ERROR_UNIT_INVOKE_SET	The configuration unit failed while attempting to apply the desired state.
0x8A15C107	-1978285817	WINGET_CONFIG_ERROR_UNIT_MODULE_CONFLICT	The module for the configuration unit is available in multiple locations with the same version.
0x8A15C108	-1978285816	WINGET_CONFIG_ERROR_UNIT_IMPORT_MODULE	Loading the module for the configuration unit failed.
0x8A15C109	-1978285815	WINGET_CONFIG_ERROR_UNIT_INVOKE_INVALID_RESULT	The configuration unit returned an unexpected result during execution.
0x8A15C110	-1978285814	WINGET_CONFIG_ERROR_UNIT_SETTING_CONFIG_ROOT	A unit contains a setting that requires the config root.
0x8A15C111	-1978285813	WINGET_CONFIG_ERROR_UNIT_IMPORT_MODULE_ADMIN	Loading the module for the configuration unit failed because it requires administrator privileges to run.
0x8A15C112	-1978285812	WINGET_CONFIG_ERROR_NOT_SUPPORTED_BY_PROCESSOR	Operation is not supported by the configuration processor.

Related Content

- <https://github.com/microsoft/winget-cli/blob/master/doc/windows/package-manager/winget/returnCodes.md>