

Creating Windows Driver Filesets

Description

This recipe is to walk you through the simple process of finding Windows OS drivers and uploading them into FileWave. Windows drivers are used in our Network Imaging process.

You can only assign a driver Fileset after an image association has been made.

To learn more about FileWave network imaging with Windows and the full process of creating, assigning, and deploying an image see: [Network Imaging Guide](#)

Ingredients

- FW Admin
- Internet Connection
- An unarchiving tool (like 7-zip)

Directions

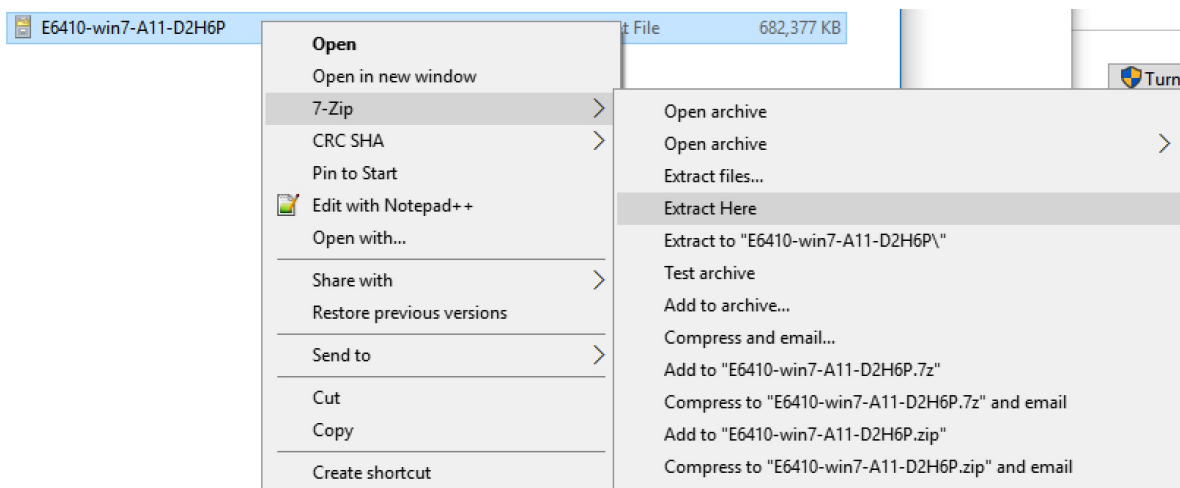
1. Find your driver packs from the manufacture. You will need to find the .CAB or .INI files. In the screenshot below I simply google searched "Dell Latitude E6410 driver pack" and the second result find me the back below where I downloaded the .CAB file

The screenshot shows a web browser window displaying a Dell TechCenter Wiki page. The page title is "Latitude E6410 Windows 7 Driver CAB". Below the title is a table with the following data:

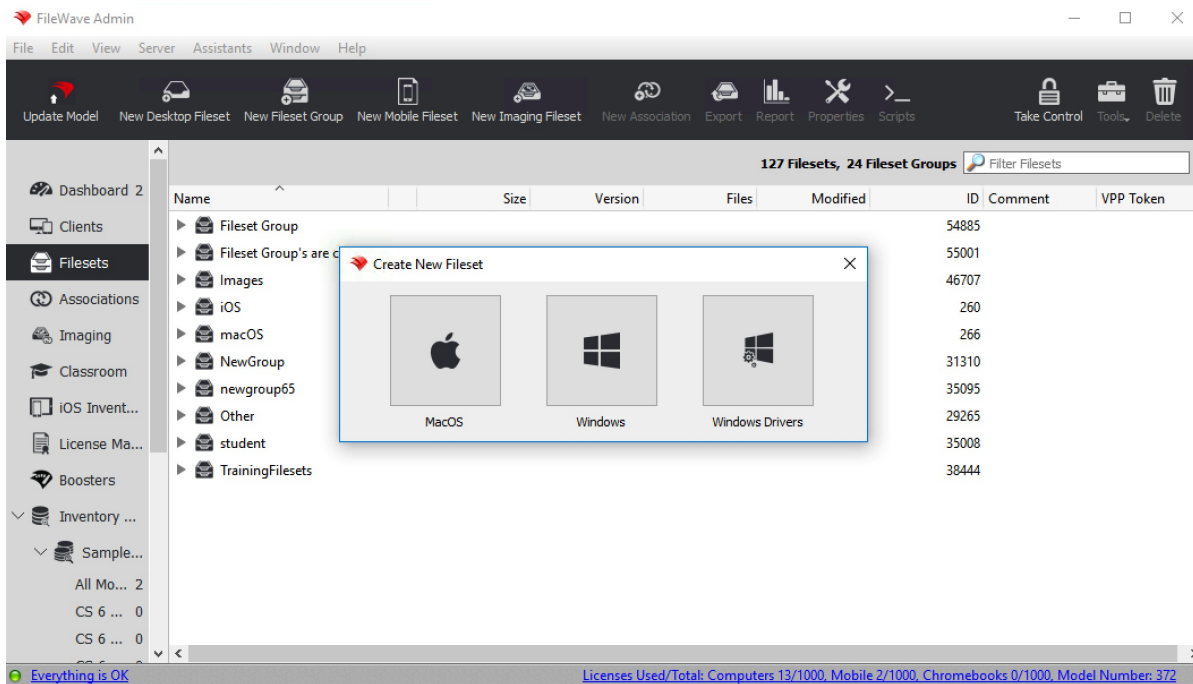
Current Version	Release Number	Release Date	File Size	Download Link
A11	D2H6P	04/25/2013	666 MB	Download Now

Below the table, a file explorer window is open, showing the file "E6410-win7-A11-D2H6P.CAB (666 MB)" and the text "From: downloads.dell.com". The file explorer has buttons for "Save", "Save as", and "Cancel".

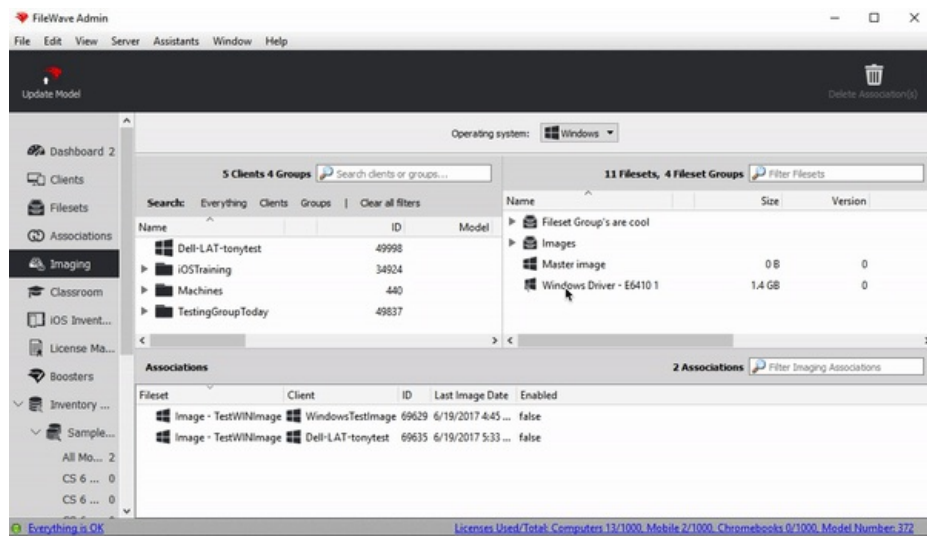
2. Once you have located and downloaded your driver pack it is time to extract it. Right click on the .CAB file and have 7-zip extract the file



3. After the drivers are extracted you can now upload the whole drivers folder into FileWave.
4. Log into FileWave Admin, go to the Filesets section, select the New Image Fileset option at the top. You will be prompted with the Create New Fileset window with three option, select Windows Drivers.



5. Now simply find the extracted folder from the .CAB file and bring it into FileWave. The Windows driver fileset will be visible in the Fileset and the Imaging section. It will remain red until it has completed the import into FileWave.
6. When the fileset has turned black you can now associated the drivers in the Imaging section. These drivers will be sent out to your device(s) during the network imaging process.
7. Once in the Imaging section find your device, or group of devices, on the left pane. Find your drivers on the right pane. Simply click, drag, and drop the drivers on top of your device, or group of devices. The drivers will be deployed along with an image that you have already assigned the device(s)



🕒Revision #4

★Created 13 June 2023 19:31:21 by Andrew Kloosterhuis

✎Updated 2 July 2023 17:05:26 by Andrew Kloosterhuis