

# Using Parameters in Apple iOS/macOS Profiles

Creating profiles with parameters in them is the ability to insert string/bool/int/datetime parameters into a profile so that they can be dynamically used on many devices.

The following will help you understand what fields can be used, and what information will come from them.

Remember: The below options are for FileWave's built in abilities. You can always create your own options by creating [custom fields](#) that are either mapped to LDAP attributes, custom scripts, or manually entered parameters. See [Custom Fields](#) for more information.

## What are my Options


### LDAP Parameters

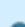
FileWave version 6.1 allows you to use Directory based parameters in your profile payloads.

```
%first_name%
%last_name%
%full_name%
%short_name%
%email%
%job_title%
%mobile_phone%
%guid%
```

Setting up a directory server for use with Parameterized Profiles is easy. Navigate to the FileWave Preferences Screen and fill out the appropriate information for your OpenDirectory, Active Directory or E-Directory. For issues and troubleshooting related to your LDAP preferences, please refer to the [LDAP section](#).

You must also be using LDAP authentication for iOS device enrollment. Instructions for that setup are in the [Using LDAP to enroll macOS/iOS/Android devices](#).

 For the above user strings to work you must be pointed to an Directory server and have it selected as authentication

 You can also map custom fields to LDAP parameters to extend the above list.  
See [Custom Fields](#) for more information.

## Inventory / Device Parameters

Starting in FileWave 6.1+ you can reference specific information about the device as well, directly from FileWave Inventory. Those fields are:

```
%OSVersion%
%SerialNumber%
%ProductName%
%BuildVersion%
%WIFIMAC%
%ICCID%
%IMEI%
```

## All Devices

Common Device Parameters	Type	FileWave Version Introduced
%archived%	datetime	13.0.0
%auth_username%	string	13.0.0
%cpu_count%	int	13.0.0
%cpu_type%	string	13.0.0
%current_ip_address%	string	13.0.0
%last_enterprise_app_validation_date%	datetime	13.0.0

%last_state_change_date%	datetime	13.0.0
%department%	string	13.0.0
%device_id%	string	13.0.0
%device_name%	string	13.0.0
%device_product_name%	string	13.0.0
%enroll_date%	datetime	13.0.0
%filewave_client_name%	string	13.0.0
%filewave_id%	string	13.0.0
%free_disk_space%	int	13.0.0
%is_system_integrity_protection_enabled%	bool	13.0.0
%is_tracking_enabled%	bool	13.0.0
%last_check_in%	datetime	13.0.0
%last_ldap_username%	string	13.0.0
%last_logged_in_username%	string	13.0.0
%location%	string	13.0.0
%management_mode%	int	13.0.0
%monitor_id%	string	13.0.0
%ram_size%	int	13.0.0
%serial_number%	string	13.0.0
%state%	int	13.0.0
%total_disk_space%	int	13.0.0
%unenrolled%	bool	13.0.0
%is_user_enrollment%	bool	13.2.0
%is_activation_lock_manageable%	bool	13.2.0
%remote_desktop_enabled%	bool	13.2.0
%external_boot_level%	bool	13.2.0

## Desktop Specific (macOS & Windows)

Desktop Device Parameters	Type	
%device_manufacturer%	string	13.0.0
%filewave_client_locked%	bool	13.0.0
%filewave_client_version%	string	13.0.0
%filewave_model_number%	int	13.0.0
%rom_bios_version%	string	13.0.0

## iOS Specific

iOS Device Parameters	Type	
%battery_level%	float (from 0 to 1)	13.0.0
%last_cloud_backup_date%	datetime	13.0.0
%last_wallpaper_change_date%	datetime	13.0.0

%apple_device_id%	string	13.0.0
%eas_device_identifier%	string	13.0.0
%is_activation_lock_enabled%	bool	13.0.0
%is_device_locator_service_enabled%	bool	13.0.0
%is_do_not_disturb_in_effect%	bool	13.0.0
%is_cloud_backup_enabled%	bool	13.0.0
%is_mdm_lost_mode_enabled%	bool	13.0.0
%is_supervised%	bool	13.0.0
%awaiting_configuration%	bool	13.0.0
%is_network_tethered%	bool	13.0.0
%itunes_store_account_is_active%	bool	13.0.0
%itunes_store_account_hash%	string	13.0.0
%languages%	string	13.0.0
%locales%	string	13.0.0
%maximum_resident_users%	int	13.0.0
%meid%	string	13.0.0
%model%	string	13.0.0
%organization_info%	string	13.0.0
%product%	string	13.0.0
%product_name%	string	13.0.0



You can also map custom fields to script results to extend the above list.  
See [Custom Fields](#) for more information.

You can also look in the inventory query builder and it will tell you the internal name in the bottom left:

Component

- ActivationLock Bypass Code
- All Devices
  - Android Device
  - Chromebook Device
  - Custom Fields
  - iOS/tvOS Device
  - macOS/Windows Device
  - Security Settings
- Archived
- Authentication Username
- Building
- Client ID
- Client Name
- CPU Count
- CPU Speed
- CPU Type
- Date of Last Enterprise App Validat...
- Date of Last State Change
- Deleted from admin
- Department
- Device ID
- Device Name
- Device Product Name
- Enroll Date

FileWave client identifier. Can be null if the client is not into FileWave yet.

Internal name: filewave\_id

Name: query name

Main Component:

Include Archived Clients

Criteria Fields

All of these expressions must be true

+ - Add Group

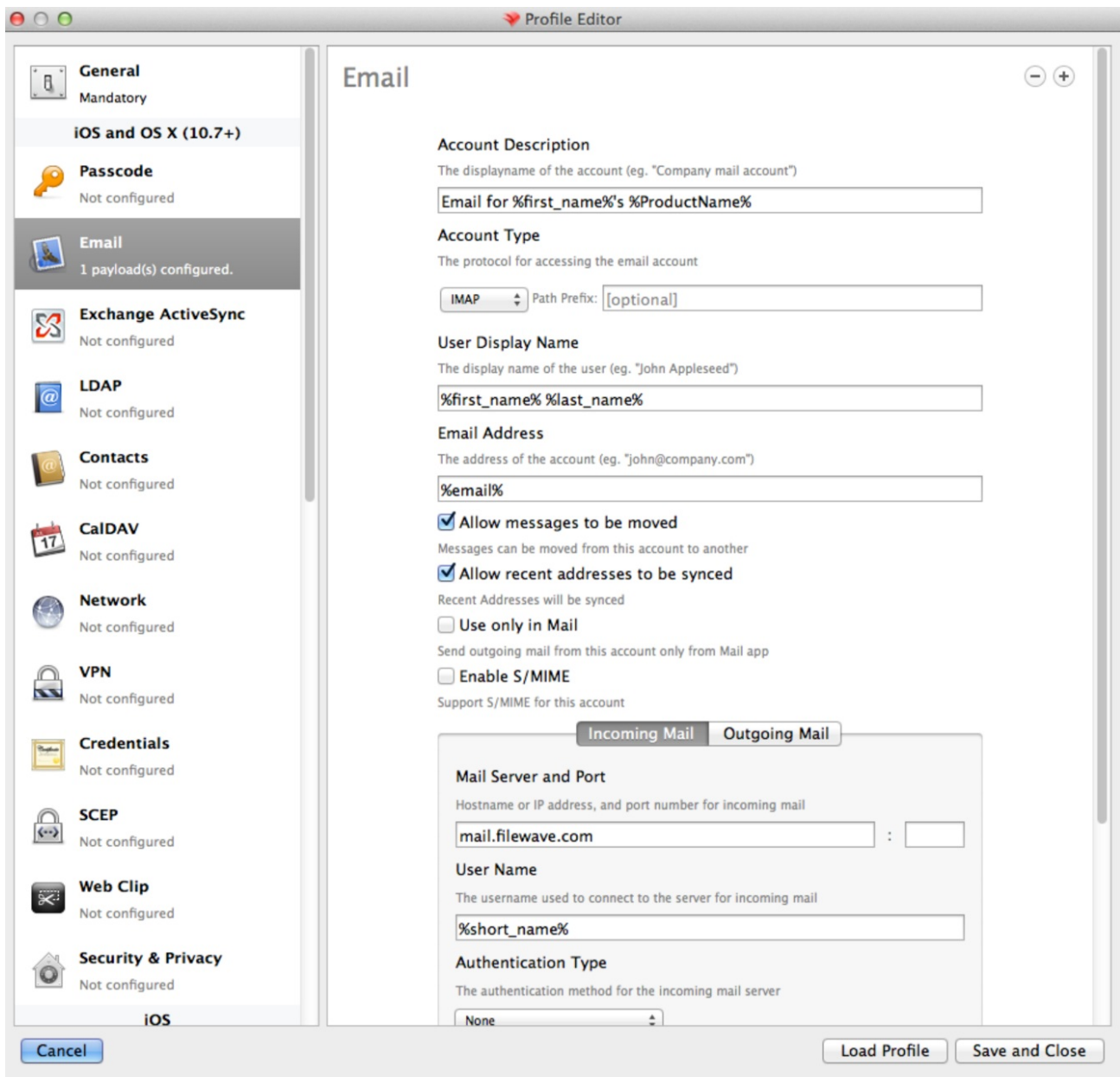
Move up Move down Move in next group Move before parent

Cancel Save

## Using parameters in profiles

To add parameters to your profiles, simple replace the normal value with one from the list above.

For instance, you might create an email profile with the account information. See the example here:



## Appendix

Directory servers use their own values for common fields. Below is the mapping for each supported directory:

### E-Directory

Profile Parameters	LDAP attribute name	Remarks
short_name	uid	
first_name	givenName	
last_name	sn	
full_name	fullName	
email	mail	
job_title	title	
mobile_phone	mobile	
guid	GUID	A binary read-only attribute

### Open Directory

Profile Parameters	LDAP attribute name
email	mail

first_name	givenName
full_name	fullName
guid	apple-generateduid
job_title	title
last_name	sn
mobile_phone	mobile
short_name	uid

## Active Directory

Profile Parameters	LDAP attribute name
email	mail
first_name	givenName
full_name	fullName
guid	objectGUID
job_title	title
last_name	sn
mobile_phone	mobile
short_name	sAMAccountName

🔄Revision #3  
★Created 13 July 2023 16:02:43 by Andrew Kloosterhuis  
✍Updated 17 April 2024 17:32:22 by Sean Holden